



Hello

Thanks for reaching out about hosting
your group at Randolph!

We have 5 unique, indoor spaces which
are perfect for casual outings.

Lets find whats right for you!

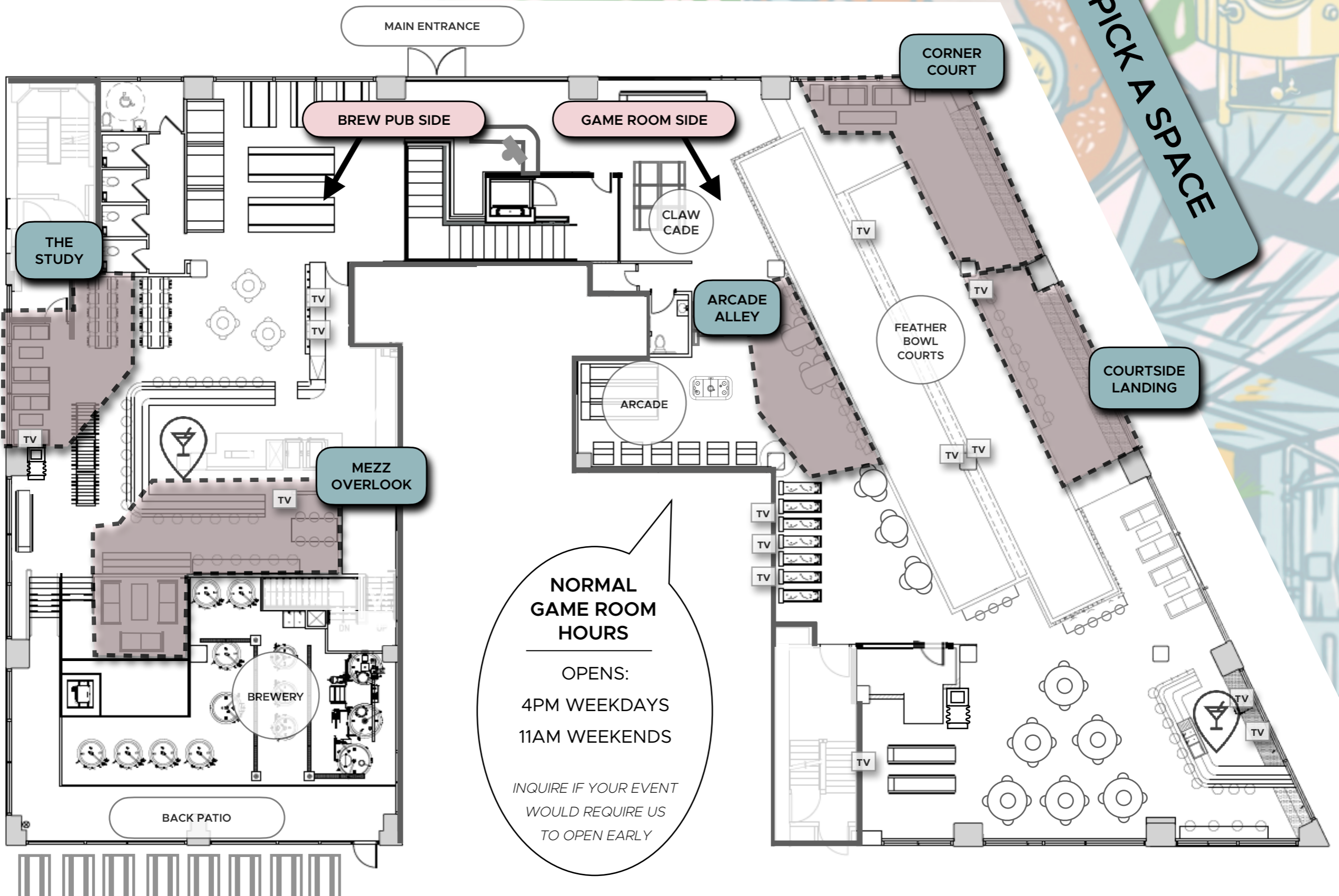


Randolph

INDOOR CASUAL GATHERING SPACES

1. CONSIDER A SIDE

2. PICK A SPACE



NORMAL GAME ROOM HOURS

OPENS:
4PM WEEKDAYS
11AM WEEKENDS

*INQUIRE IF YOUR EVENT
WOULD REQUIRE US
TO OPEN EARLY*

ICED & READY

BEER TUB\$138

16 randolph cans (16oz)
assorted styles, 4 of each

HARD SELTZER TUB\$105

16 rubi cans (12oz)
cherry lime, margarita, mai tai, white sangria

WINE TUB\$125

9 archer roose cans (8.5oz)
sauv blanc, malbec, bubbly, rosé

MIXED DRINK TUB\$140

5 randolph beers (16oz)
5 rubi cans (12oz)
5 archer roose wines (8.5oz)

CASUAL OUTING DRINK TUBS

READY WHEN YOU ARRIVE + SAVE ABOUT 10%

* MUST BE ORDERED 3 DAYS IN ADVANCE



LIGHT BITES

GUAC & CHIPS (V) ★ house guac, roasted green salsa	77
PERFECT NACHOS ★ guac, pep. jack, blk. bean, jalapeño, sour cream	82
FRY SAMPLER (V) waffle + sweet potato + tots & 3 sauces	82
POTATO CROQUETTES 🌱 truffle oil	82
BEER GARDEN PRETZELS (V) smoked sea salt, mustard	82
SPRING ROLLS (V) veggies & soy, scallion	82
PIGS IN A BLANKET beef, everything bagel seasoning, mustard	82
HUMMUS PLATTER (V) (GF) chili oil, fried chickpeas, w/ veggies	82
SHISHITO PEPPERS (V) lemon, soy, togarashi spice	82
CHICKEN WINGS* ★ buttermilk ranch, carrot & celery	88
CAULIFLOWER WINGS* (V) vegan ranch, carrot & celery	88

* WING SAUCES: buffalo, korean bbq, jerk, mango habanero (pick one)

TREATS

CHURRO PRETZELS 🌱 powdered sugar, Nutella	50
WARM DONUTS 🌱 buttercream dip	50
ROCKY ROAD BROWNIE BITES 🌱 nuts, chocolate drizzle	50

CASUAL OUTING PARTY PLATTERS

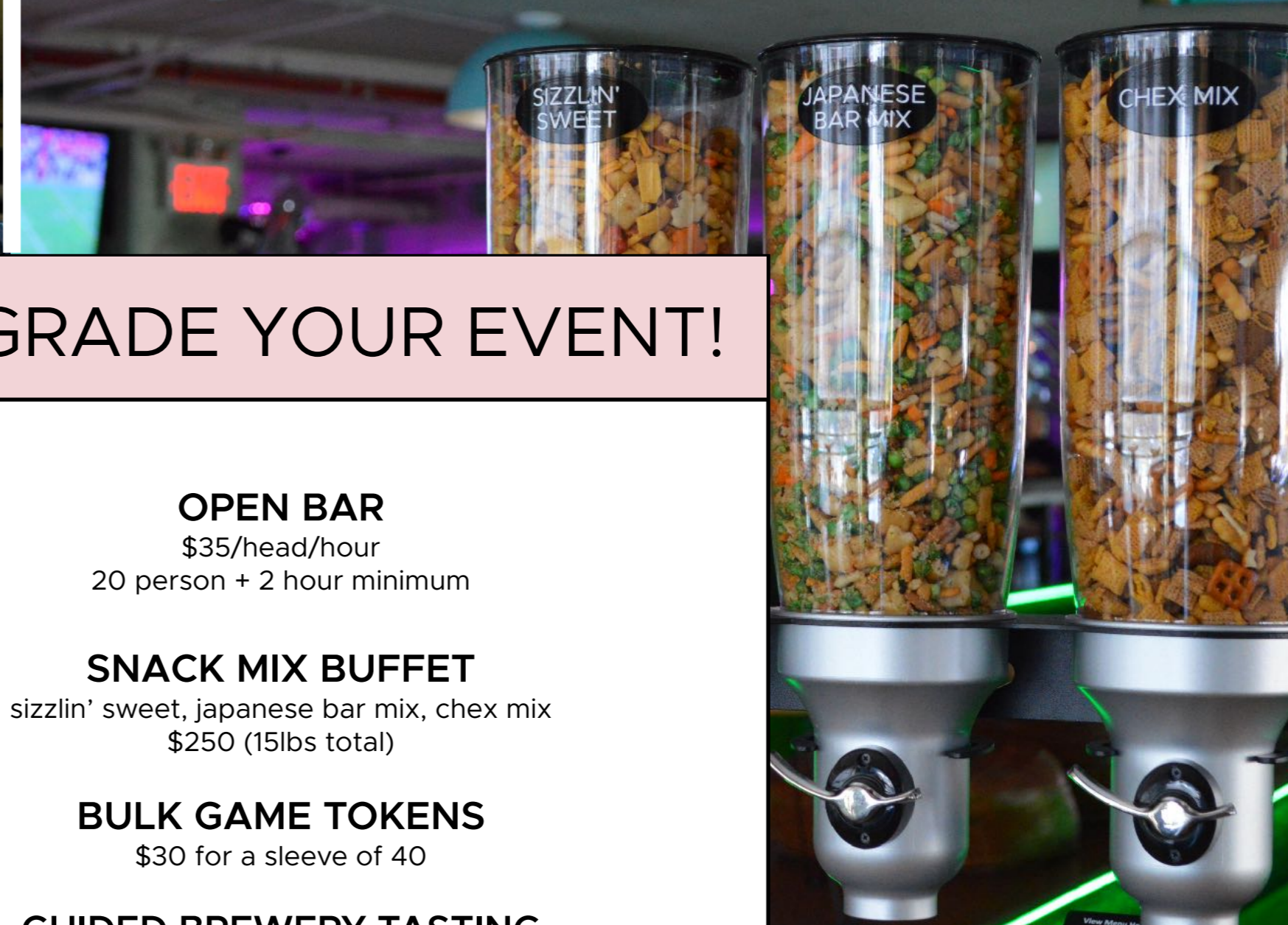
5-7 SERVINGS PER PLATTER

* MUST BE ORDERED 3 DAYS IN ADVANCE

MINI MAINS

16 CHEESEBURGER SLIDERS american cheese, house aioli	90
16 FRIED CHICKEN SLIDERS buttermilk, sweet pickle, mayo	90
16 GARDEN BURGER SLIDERS (V) vegan goat cheese	90
20 PORK TAQUITOS ★ salsa verde	85
20 JERK JACKFRUIT TAQUITOS (V) ★ salsa verde	85
CRISPY COD NIBBLERS tartar sauce	90
CHICKEN TENDIES bbq sauce	85
VEGAN CHICK'N TENDIES (V) bbq sauce	85
20 MARINATED STEAK SKEWERS (GF) chimichurri & lime	95
15 GRILLED SHRIMP SKEWERS (GF) pineapple & pepper	95

★ NO WHEAT OR GLUTEN-CONTAINING INGREDIENTS, BUT COOKED IN A SHARED FRYER NOT SUITABLE FOR THOSE AFFECTED BY CROSS CONTAMINATION



UPGRADE YOUR EVENT!

OPEN BAR

\$35/head/hour

20 person + 2 hour minimum

SNACK MIX BUFFET

sizzlin' sweet, japanese bar mix, chex mix

\$250 (15lbs total)

BULK GAME TOKENS

\$30 for a sleeve of 40

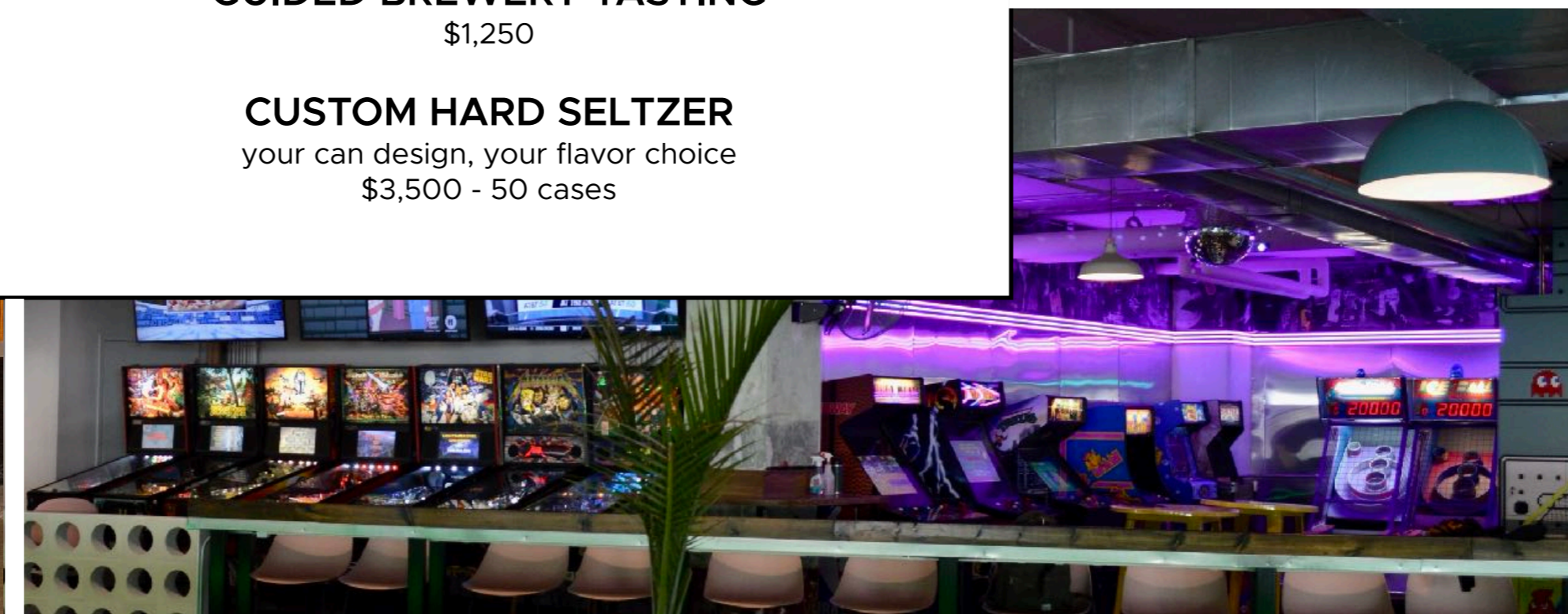
GUIDED BREWERY TASTING

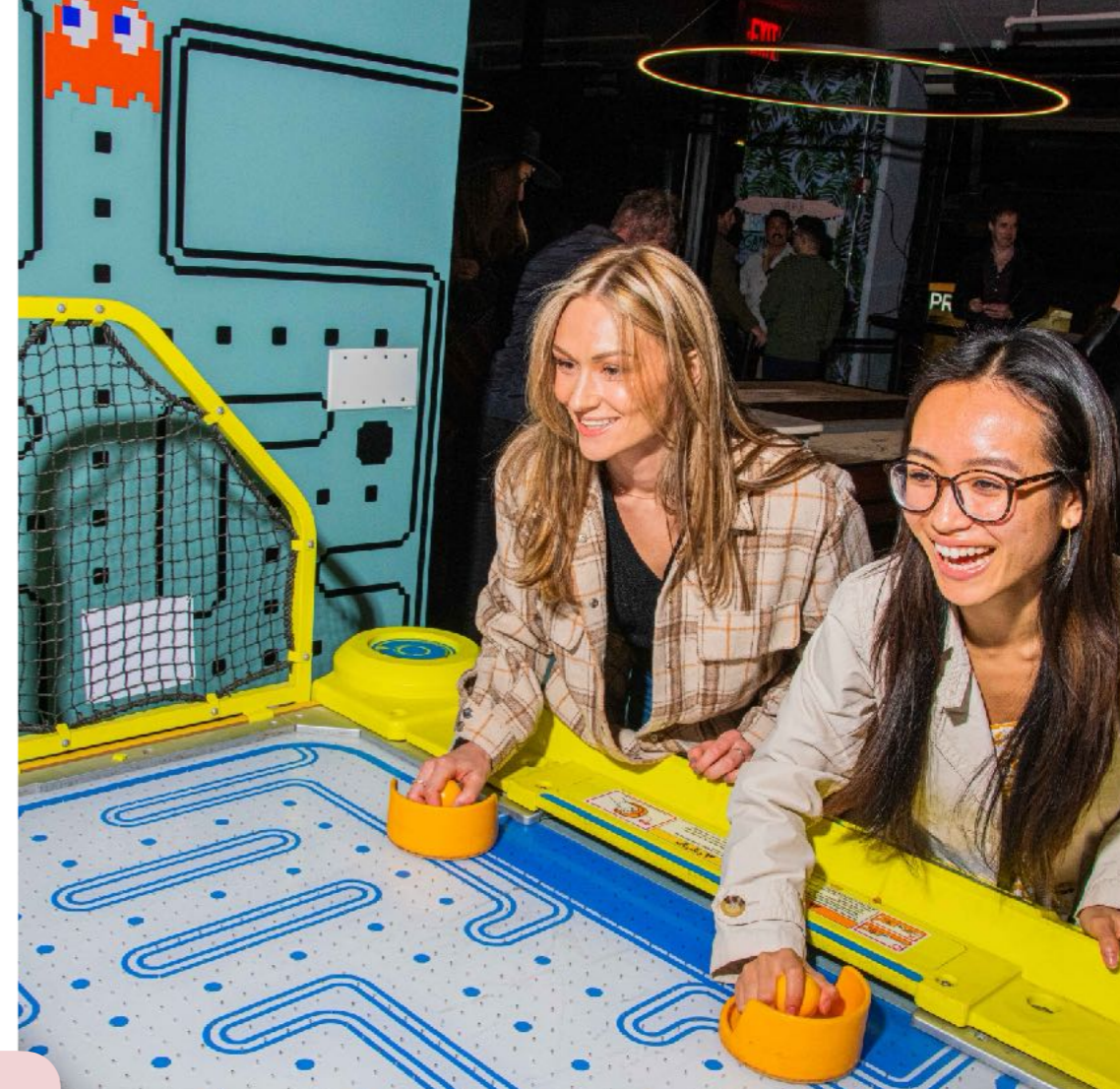
\$1,250

CUSTOM HARD SELTZER

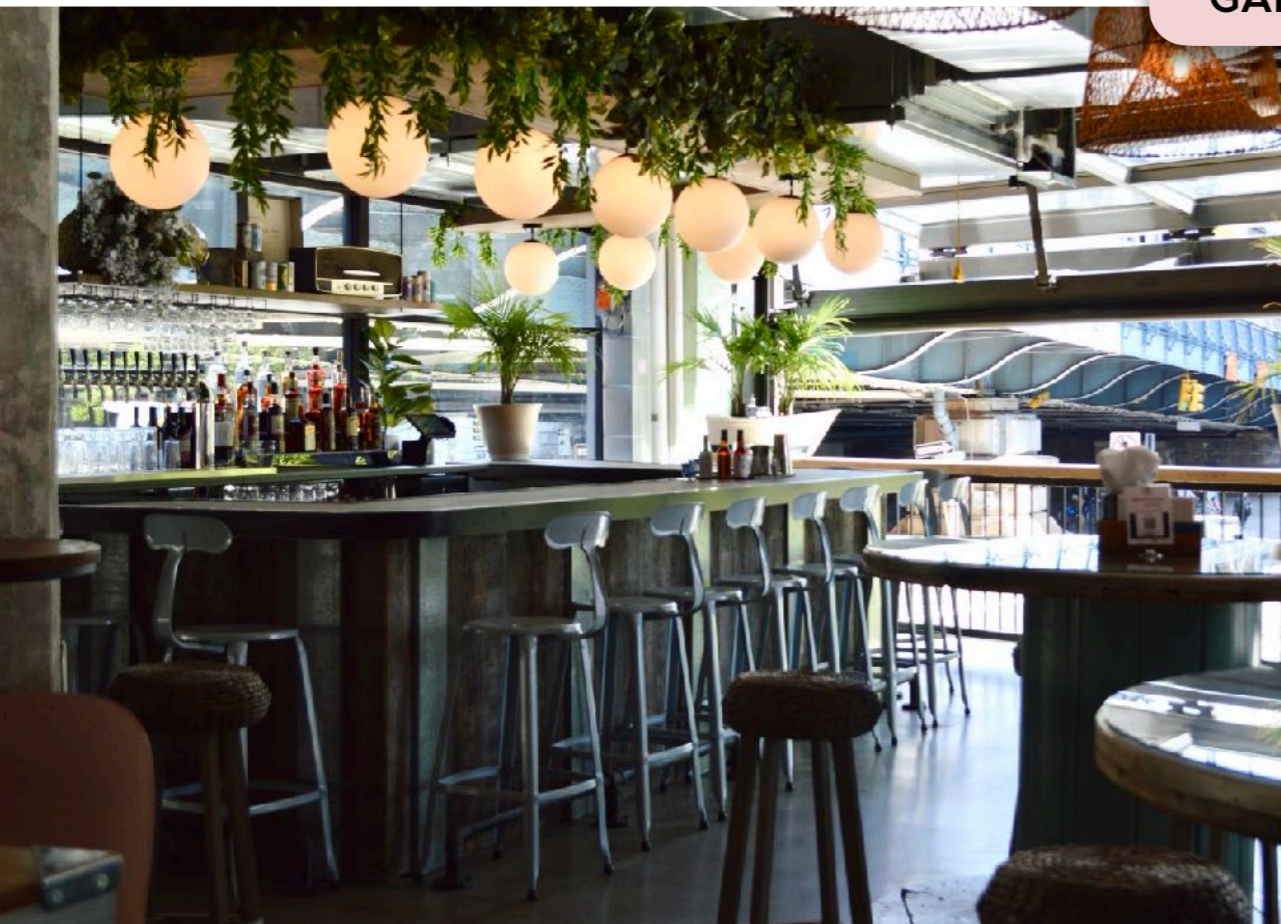
your can design, your flavor choice

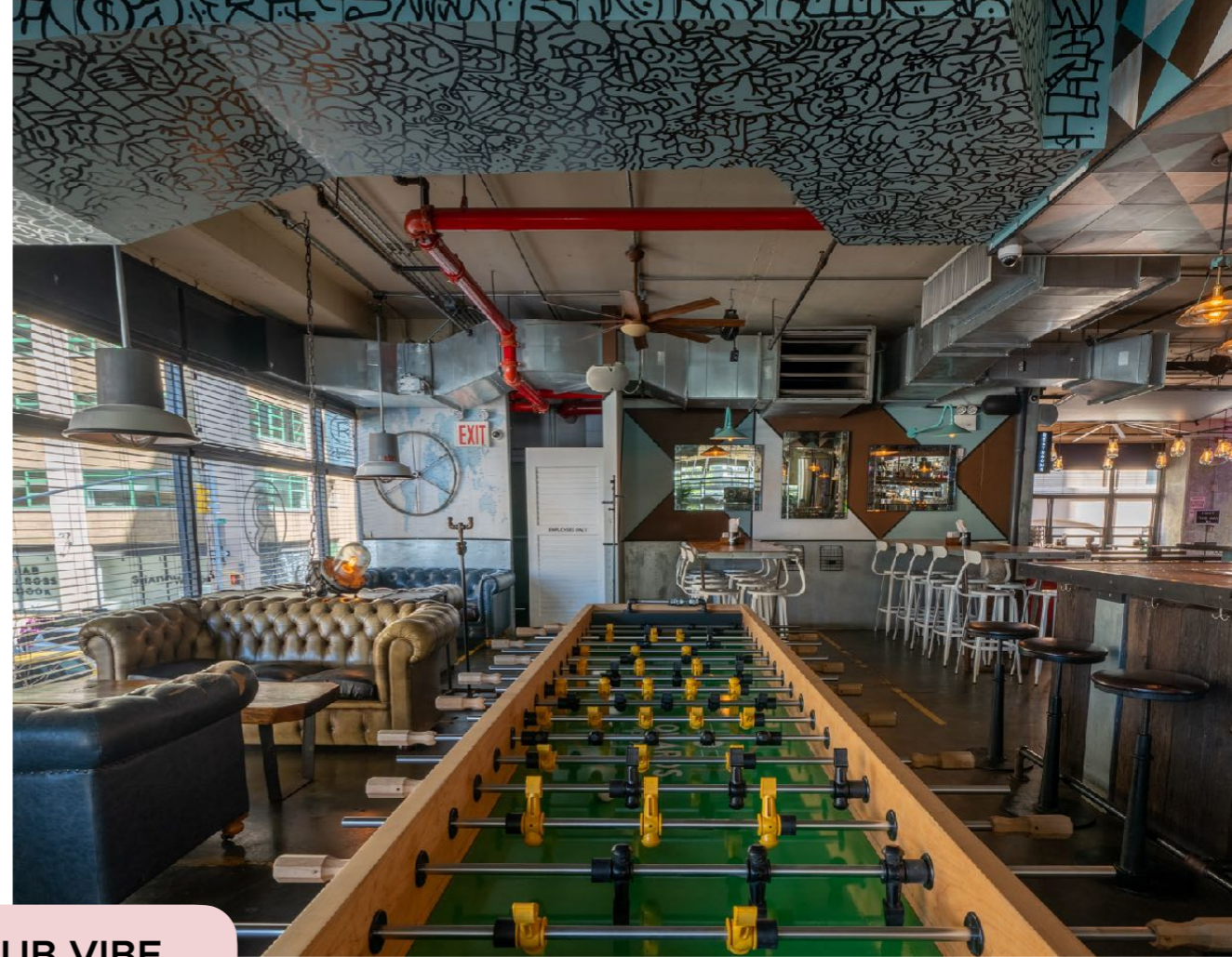
\$3,500 - 50 cases





GAME ROOM VIBE





BREW PUB VIBE



COURTSIDE LANDING

- GAME ROOM SIDE-
UP TO 40 PPL

LARGE STADIUM BENCH + GENTS RAIL & COUNTER STOOLS,
NEXT TO THE BAR, OVERLOOKING FEATHER BOWLING
COURTS, THE REST OF THE GAME ROOM & A BUNCH OF TVs
(2 OF WHICH ARE DEDICATED)

GOOD FOR:

HOME BASE FOR DRINKS & SHARED BITES ADJACENT TO
FEATHER BOWLING (DEFINITELY THINK ABOUT BOOKING A
LANE TO GO WITH THIS SPACE!)

SPACE FEE = \$400 FOR 3HRS

NO MINIMUM SPENDS OR OTHER REQUIREMENTS





CORNER COURT

- GAME ROOM SIDE -
UP TO 40 PPL

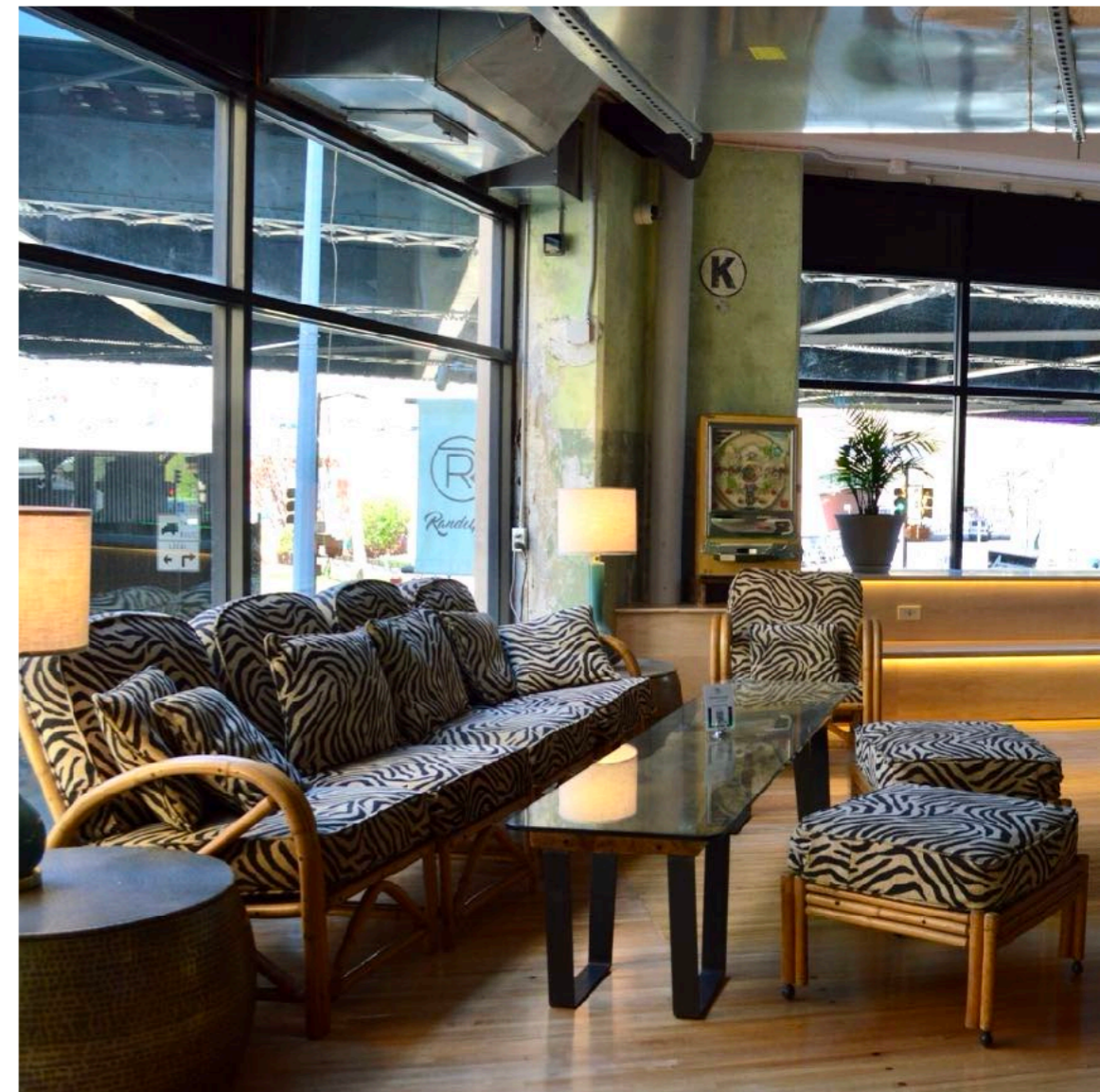
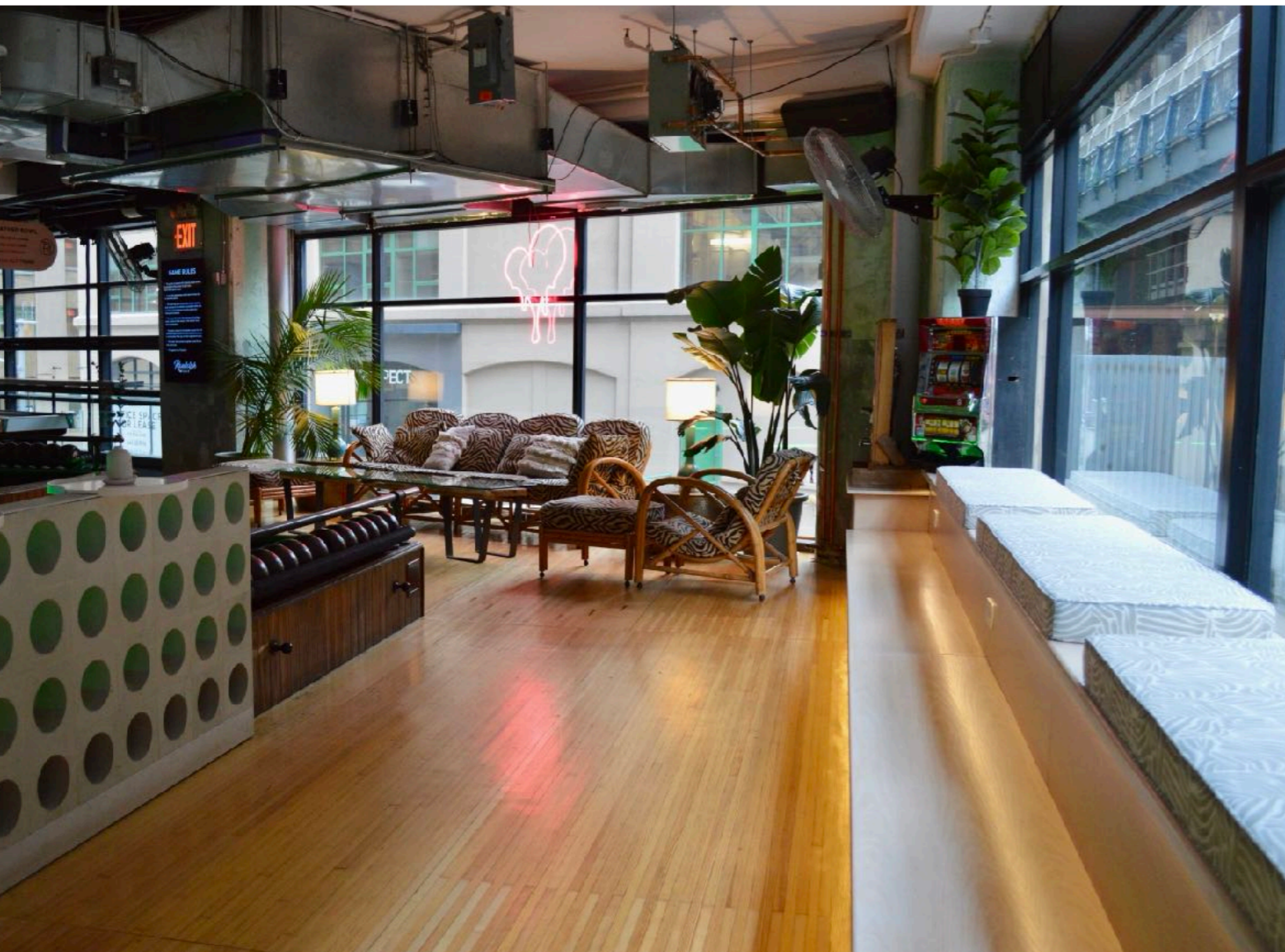
COUCH + LARGE STADIUM BENCH RIGHT AT THE ENTRANCE OF THE FEATHER BOWLING COURTS AND LOOKING OUT AT THE WHOLE GAME ROOM + A 70" DEDICATED TV

GOOD FOR:

HOME BASE FOR FEATHER BOWLING, DRINKS & SHARED BITES (BOOK A LANE WITH THIS SPACE FOR SURE!)

SPACE FEE = \$400 FOR 3HRS

NO MINIMUM SPENDS OR OTHER REQUIREMENTS



ARCADE ALLEY

GAME ROOM SIDE
UP TO 30 PPL

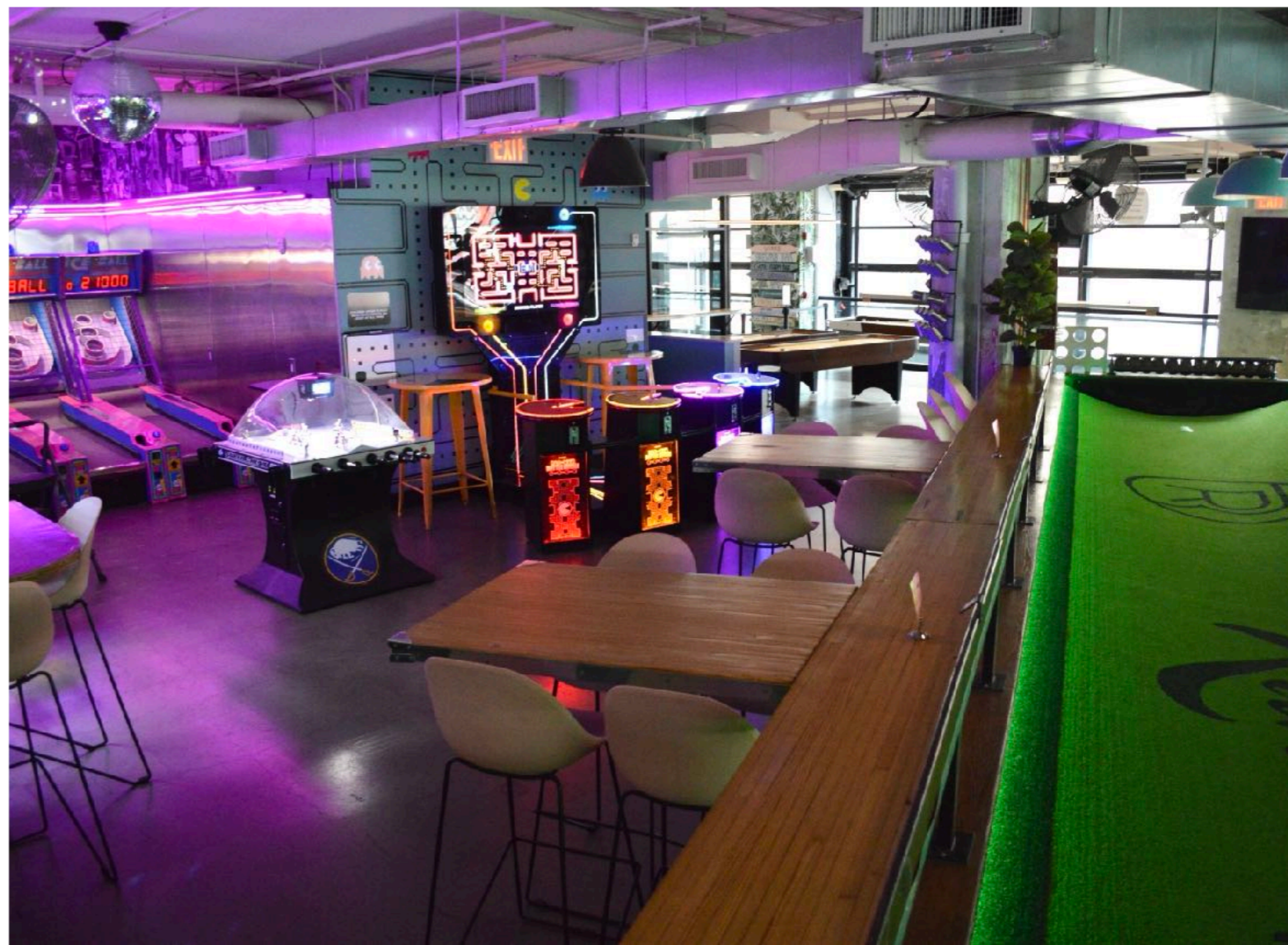
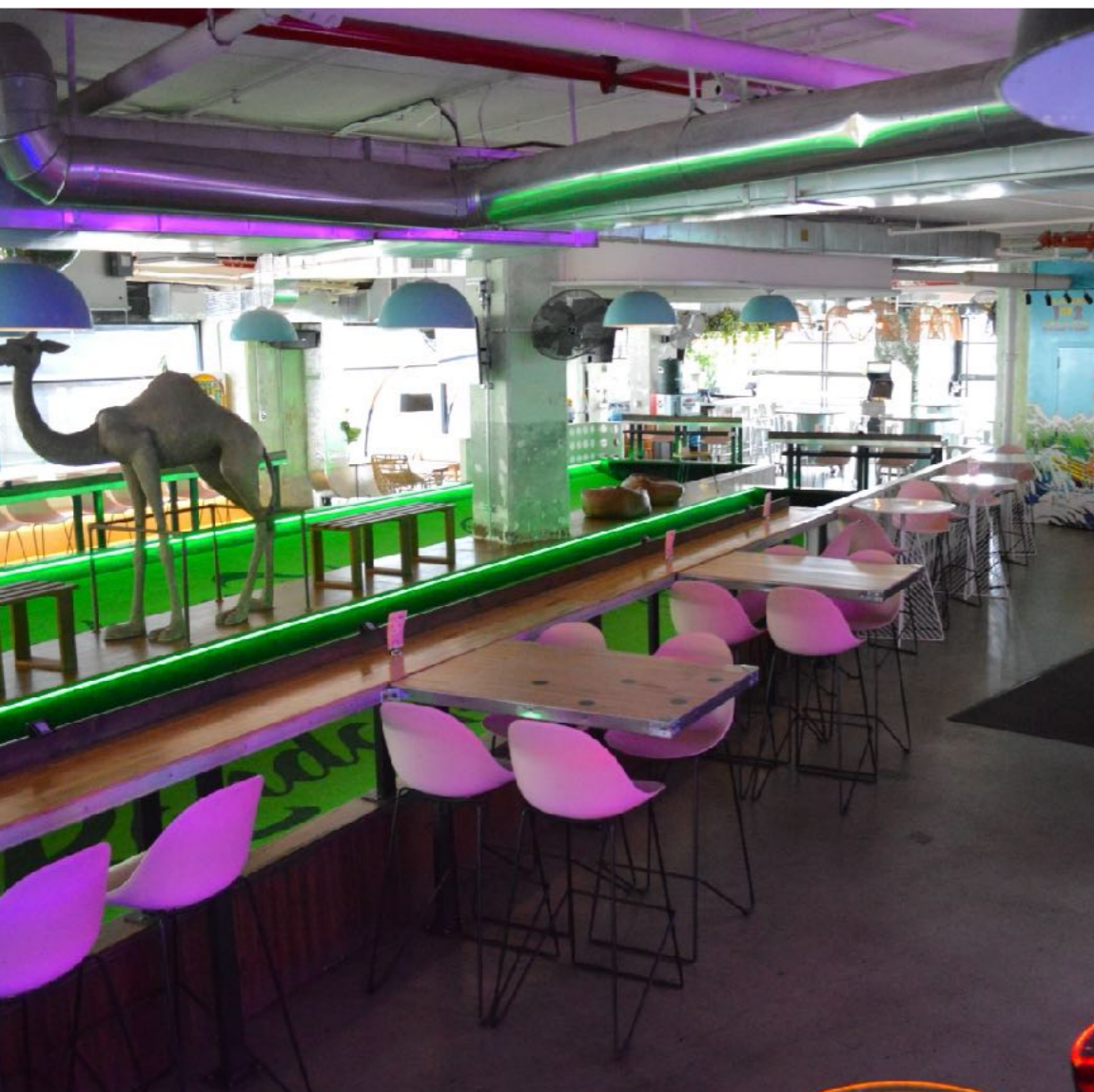
2 HI TOPS + GENTS RAIL SEATING SANDWICHED BETWEEN
FEATHER BOWLING COURTS AND THE ARCADE. INCLUDES A
50" DEDICATED TV + 3 70" TVs RIGHT NEAR BY

GOOD FOR:

DRINKS & SHARED BITES FOR GROUPS THAT ARE GAME
HEAVY AND/OR WANT TO BE NEAR TVs (THINK ABOUT
BOOKING A COURT WITH THIS SPACE!)

SPACE FEE = \$300 FOR 3HRS

NO MINIMUM SPENDS OR OTHER REQUIREMENTS





MEZZ-OVERLOOK

- BREW PUB SIDE -
UP TO 40 PPL

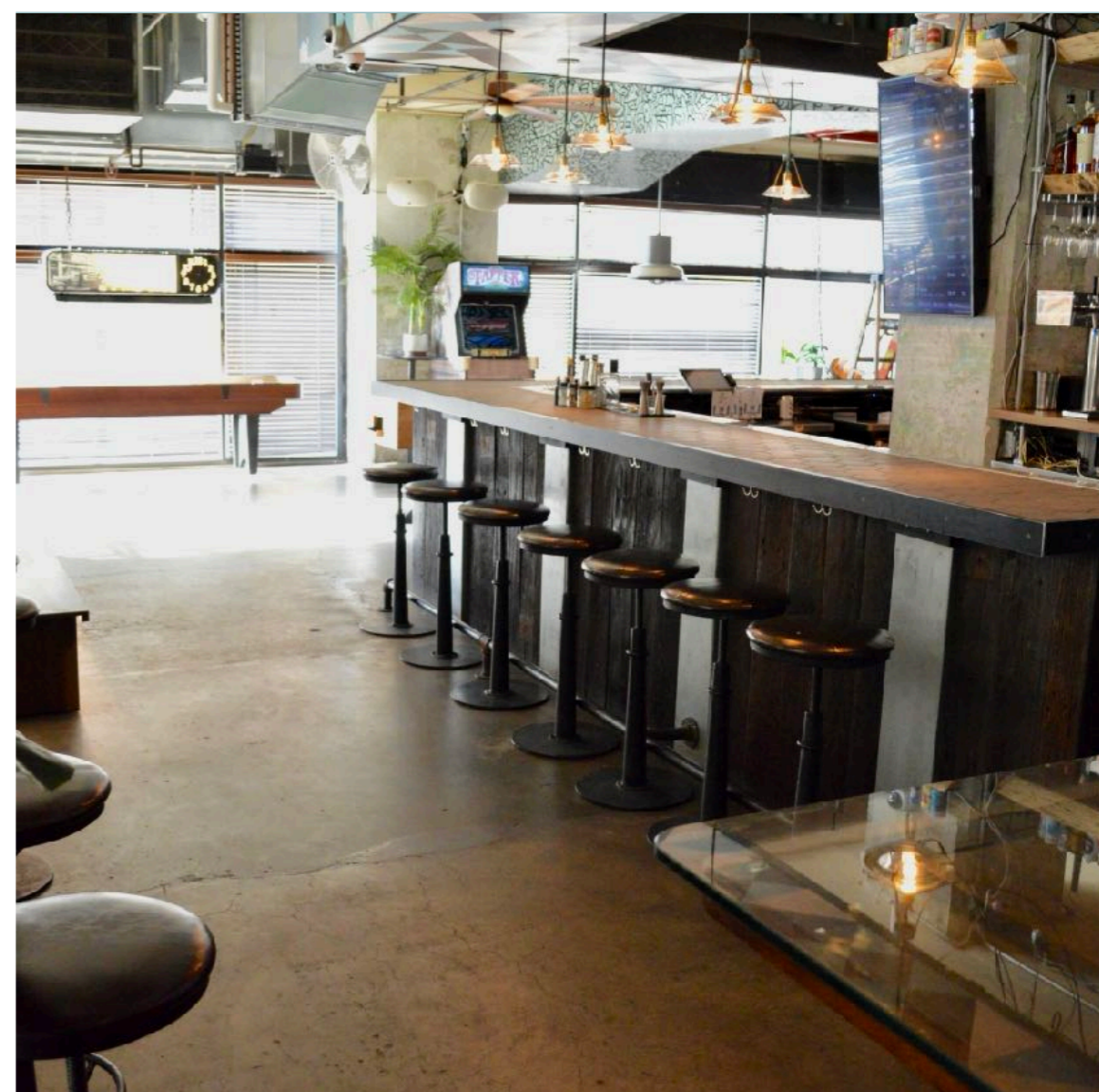
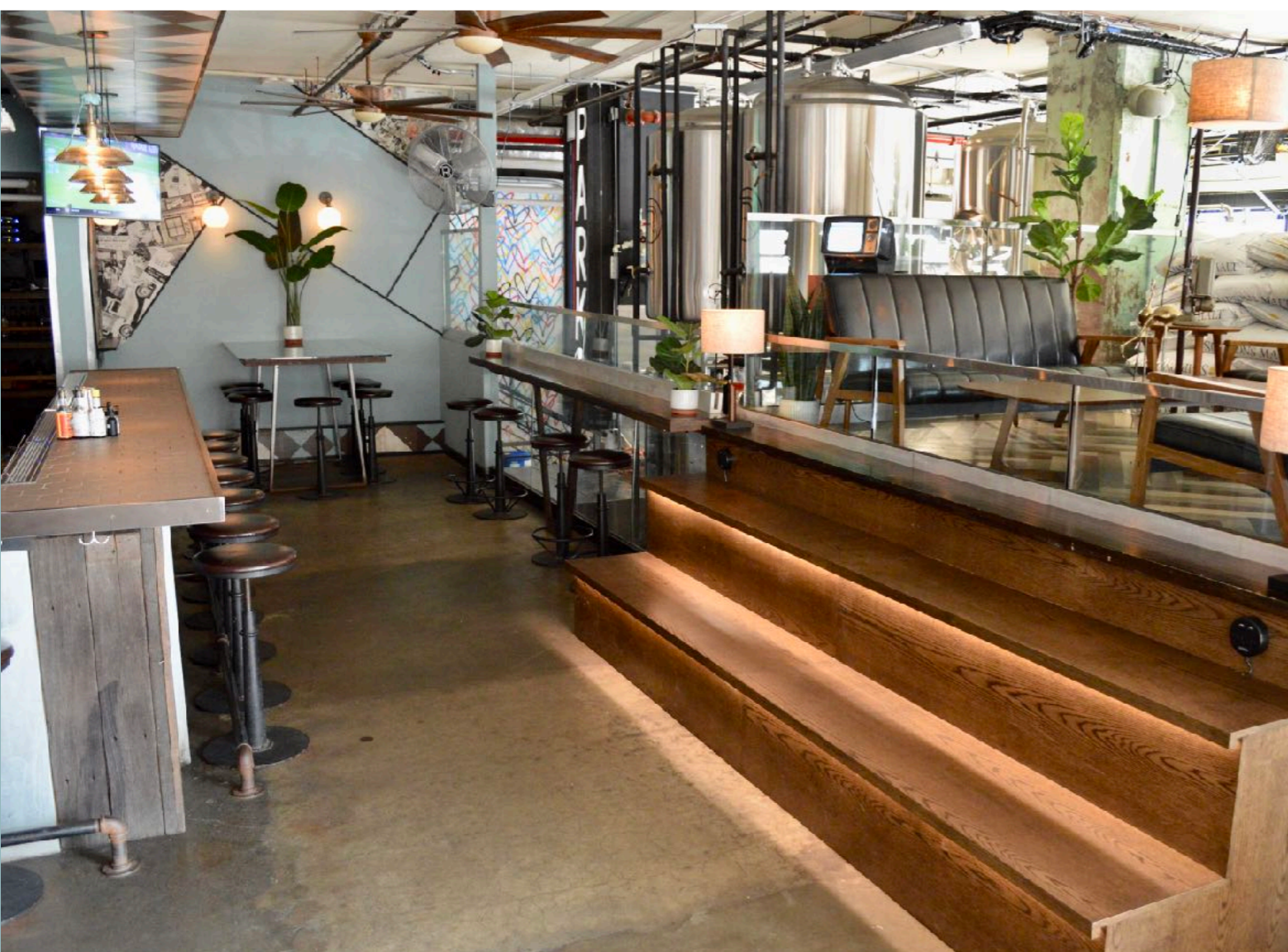
LARGE NOOK + ADJOINING MEZZANINE ALL OVERLOOKING THE BREWERY. INCLUDES A DEDICATED SIDE OF THE MAIN BAR, SOME COUCHES, A STADIUM SEATING BENCH, AN 8-SEATER HIGH TOP TABLE + DEDICATED TV

GOOD FOR:

GROUPS WANTING THAT 'SECTION OF THE BAR' SITUATION FOR DRINKS & BITES (OR JUST DRINKS) IN A SPACE FROM WHICH ONE COULD LITERALLY TOUCH THE BREWERY

SPACE FEE = \$450 FOR 3HRS

NO MINIMUM SPENDS OR OTHER REQUIREMENTS



THE STUDY

- BREW PUB SIDE -
UP TO 40 PPL

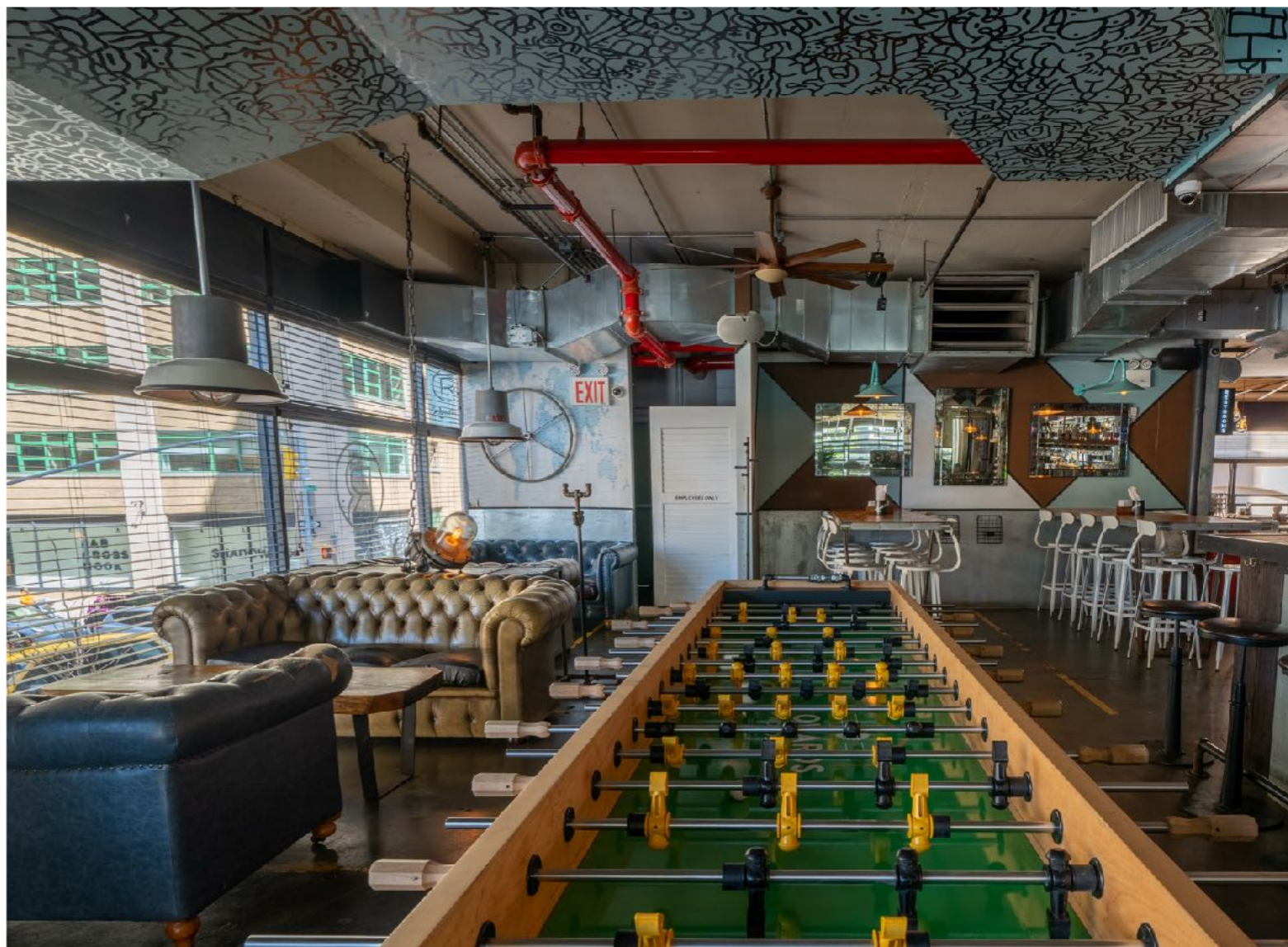
COMFORTABLE CORNER SECTION WITH CHESTERFIELD
COUCH SEATING + LARGE HI TOP TABLE WITH A GRACEFUL
OVERFLOW TO THE MAIN BAR AREA

GOOD FOR:

DRINKS & FOOD FOR GROUPS THAT WANT TO MIX/MINGLE
BETWEEN SITTING & STANDING, HAVE EASY ACCESS TO THE
BAR + A GIANT FOOSBALL TABLE, IF THATS YOUR THING!

SPACE FEE = \$450 FOR 3HRS

NO MINIMUM SPENDS OR OTHER REQUIREMENTS





WE HOPE TO
SEE YOU SOON!