



Hello

Thanks for reaching out about hosting
your group at Randolph!

We have 5 unique, indoor spaces which
are perfect for casual gatherings. We
also have a few bookable rooftop tables
(seasonal & weather dependent) which
work in a similar way.

Lets find whats right for you!

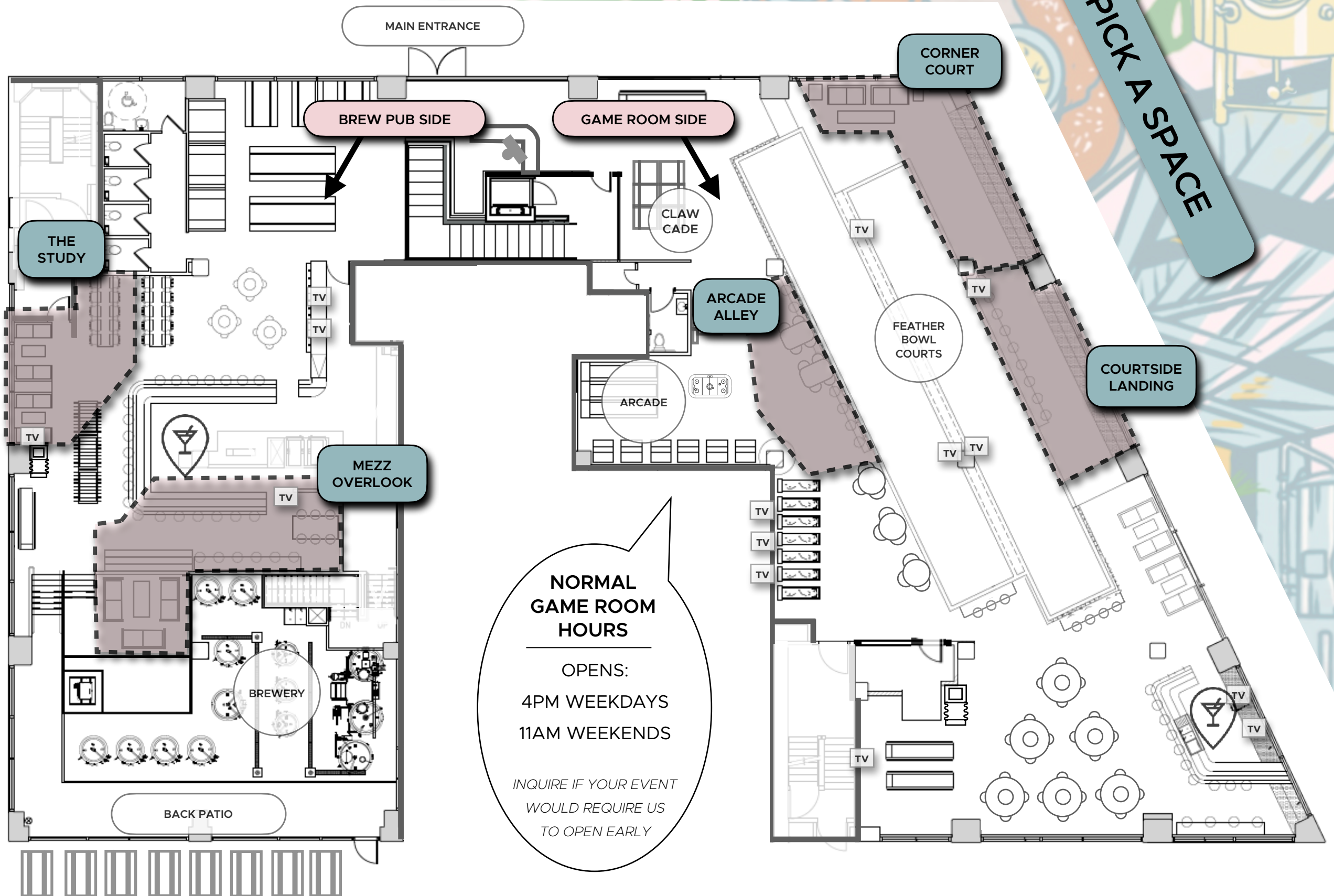


Randolph

INDOOR CASUAL GATHERING SPACES

1. CONSIDER A SIDE

2. PICK A SPACE



**GET THE PARTY
STARTED RIGHT...**

TUBS HAVE TO BE ORDERED
3 DAYS IN ADVANCE

PARTY TUB SPECIALS

READY RIGHT WHEN YOU WALK IN + SAVE ABOUT 10%

BEER TUB

16 randolph cans (16oz)
assorted styles, 4 of each

\$135

HARD SELTZER TUB

16 rubi cans (12oz)
cherry lime, margarita, mai tai, white sangria

\$105

WINE TUB

9 archer roose cans (8.5oz)
3 sauv blanc, 3 malbec, 3 bubbly

\$125

MIXED BEER/WINE/SELTZER TUB

5 randolph beers + 5 rubi cans + 5 archer roose wines

\$140

**BUT DON'T
SWEAT IT!**

WE HAVE 2 FULL BARS THAT
SERVE UP EVERYTHING
ON THE SPOT
(EXCEPT PARTY TUBS ;))

PARTY PLATTERS

5-7 SERVINGS PER
PLATTER

MUST BE ORDERED
3 DAYS IN ADVANCE

LITE BITES

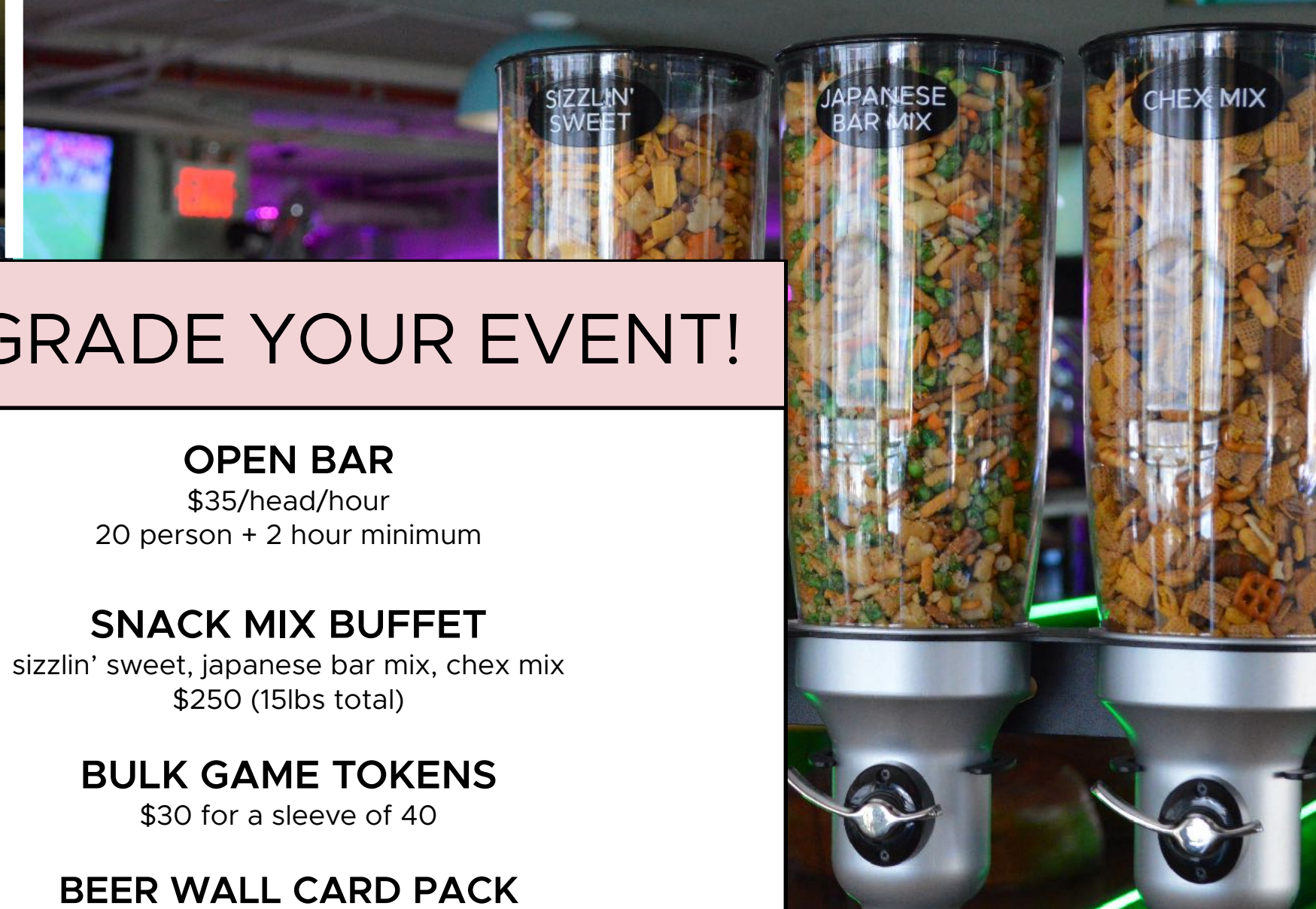
GUAC & CHIPS ① ★ house guac, roasted green salsa	70
LOADED NACHOS 🌱 ★ sour cream, guac, pepper jack, black bean, jalapeno	75
FRY SAMPLER ① waffle + sweet potato + tots spicy mayo, sweet chili, ranch	75
POTATO CROQUETTES 🌱 truffle	75
BEER GARDEN PRETZELS ① smoked sea salt, mustard	75
SPRING ROLLS ① veggies & soy, scallion	75
PIGS IN A BLANKET beef, everything bagel seasoning, mustard	75
HUMMUS PLATTER ① (GF) chili oil, fried chickpeas, w/ veggies	75
SHISHITO PEPPERS ① ★ lemon, soy, togarashi spice	75
WINGS ★ veggies, buttermilk ranch	80
CAULIFLOWER WINGS ① veggies, vegan ranch	80
WING SAUCE OPTIONS buffalo, korean bbq, jerk, or mango habanero choose one	

MINI MAINS

16 CHEESEBURGER SLIDERS american cheese, house aioli	85
16 FRIED CHICKEN SLIDERS buttermilk, sweet pickle, mayo	85
16 GARDEN BURGER SLIDERS ① vegan goat cheese	85
20 PORK TAQUITOS ★ salsa verde	80
20 JERK JACKFRUIT TAQUITOS ① ★ salsa verde	80
CRISPY COD NIBBLERS tartar sauce	80
CHICKEN TENDIES bbq sauce	80
VEGAN CHICK'N TENDIES ① bbq sauce	80

TREATS

CHURRO PRETZELS 🌱 powdered sugar, Nutella	45
WARM DONUTS 🌱 buttercream dip	45
ROCKY ROAD BROWNIE BITES 🌱 nuts, chocolate drizzle	45



UPGRADE YOUR EVENT!

OPEN BAR

\$35/head/hour
20 person + 2 hour minimum

SNACK MIX BUFFET

sizzlin' sweet, japanese bar mix, chex mix
\$250 (15lbs total)

BULK GAME TOKENS

\$30 for a sleeve of 40

BEER WALL CARD PACK

\$90 (5 cards @ \$20 pre-loaded)

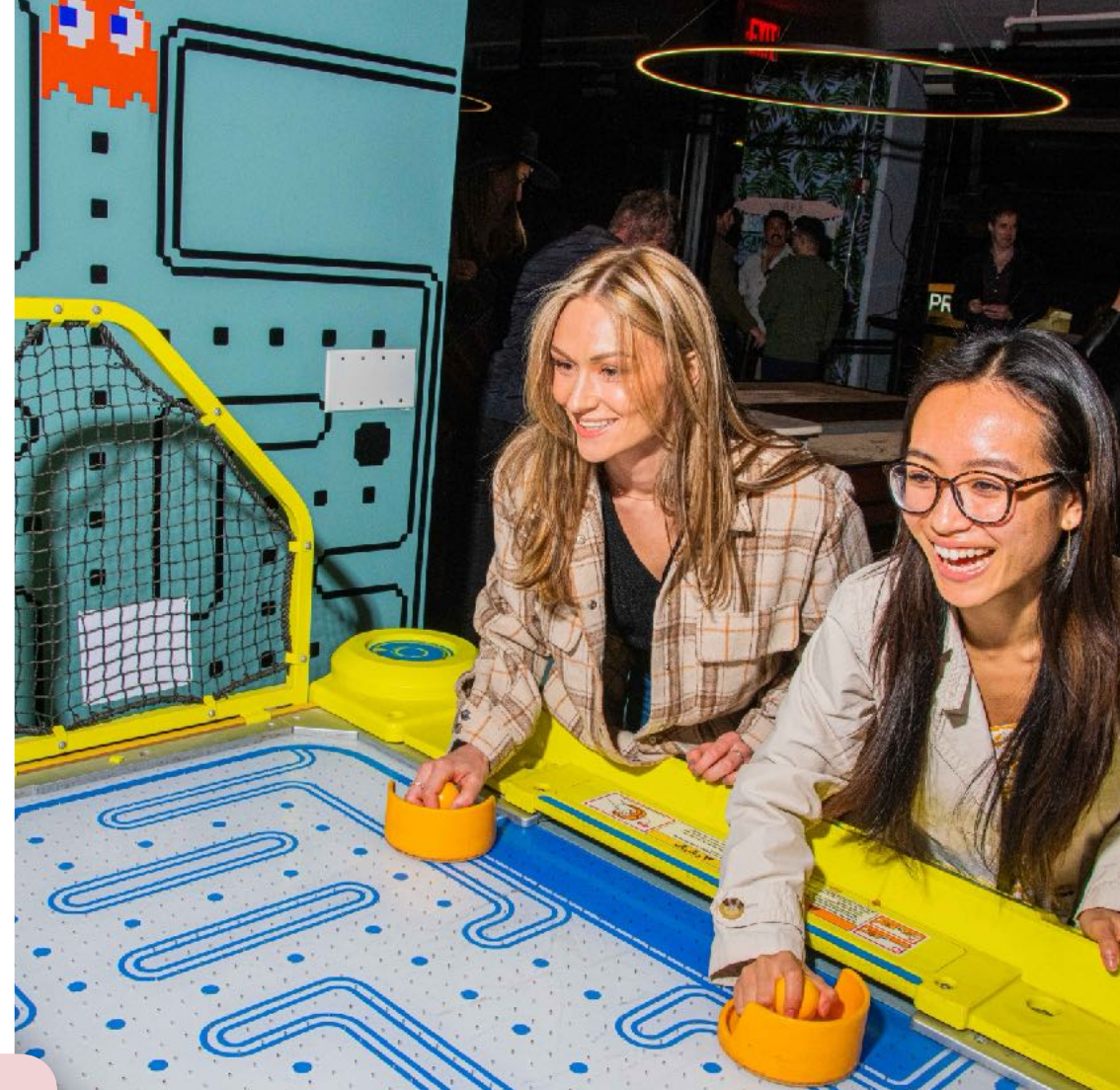
GUIDED BREWERY TASTING

\$1,250

CUSTOM HARD SELTZER

your can design, your flavor choice
\$3,500 - 50 cases



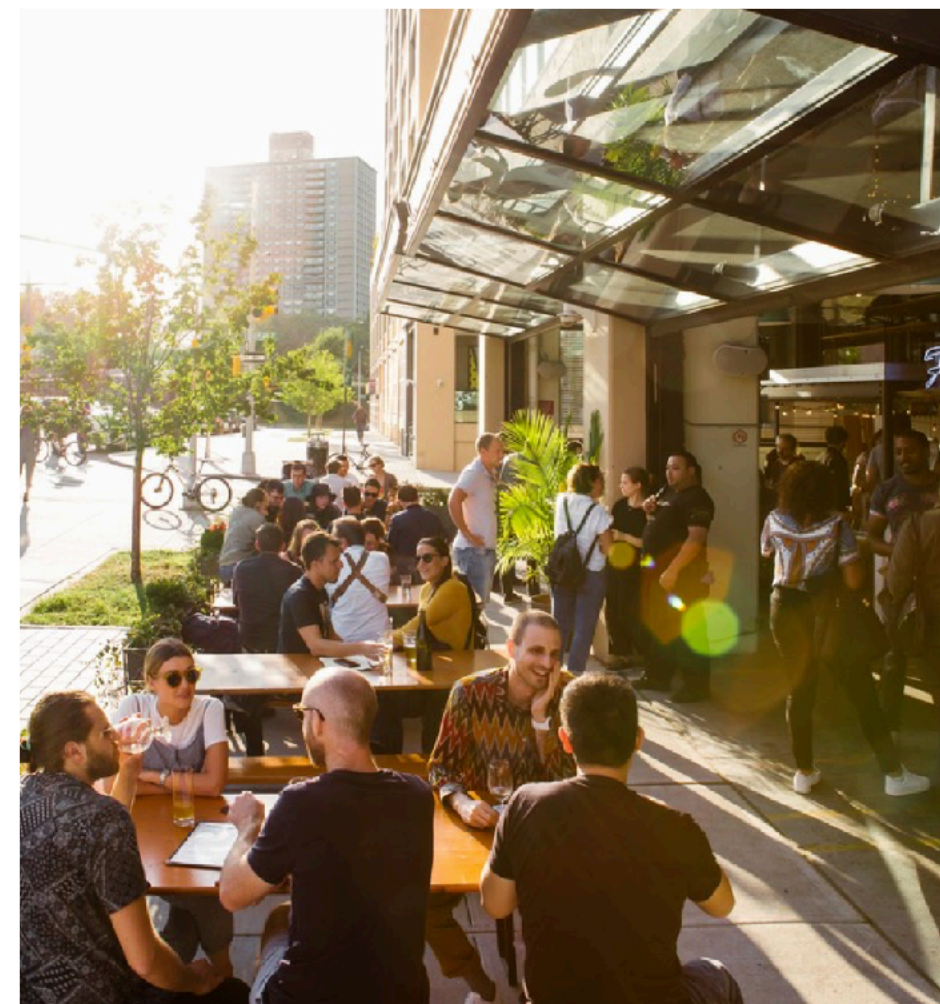
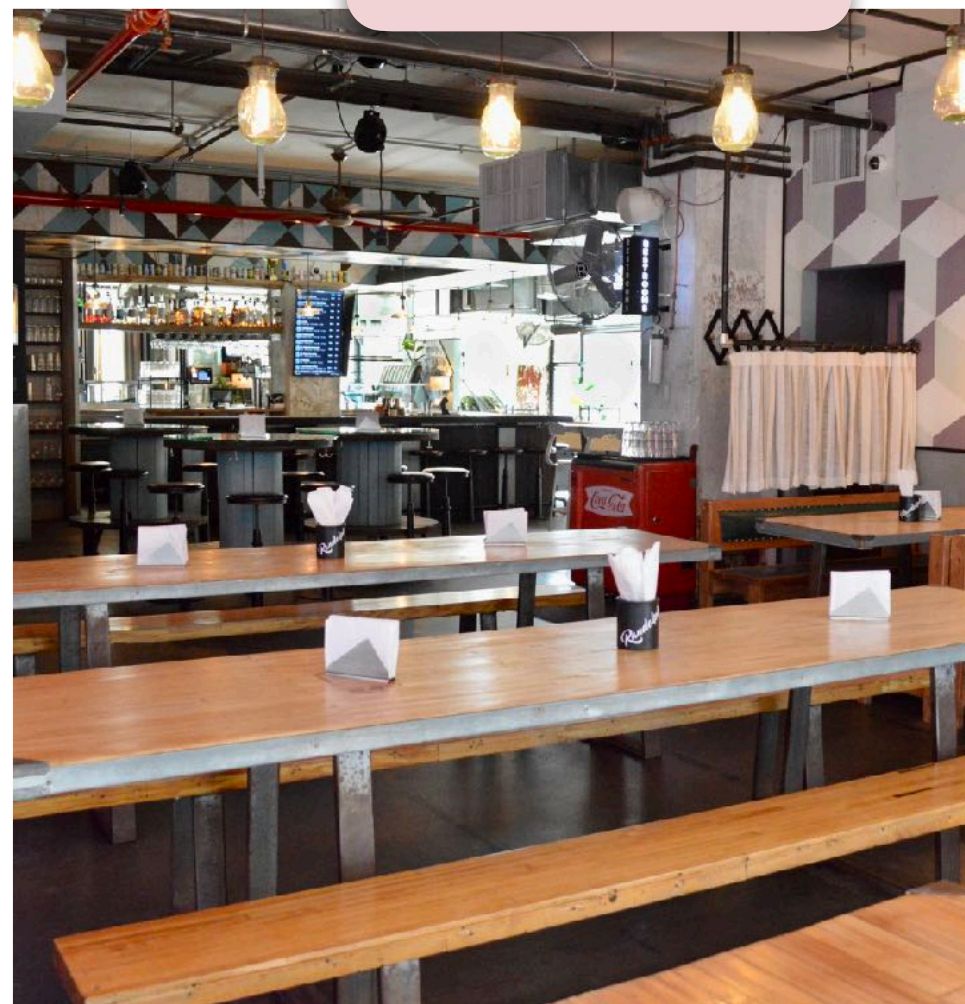


GAME ROOM VIBE





BREW PUB VIBE



COURTSIDE LANDING

- GAME ROOM SIDE-
UP TO 40 PPL

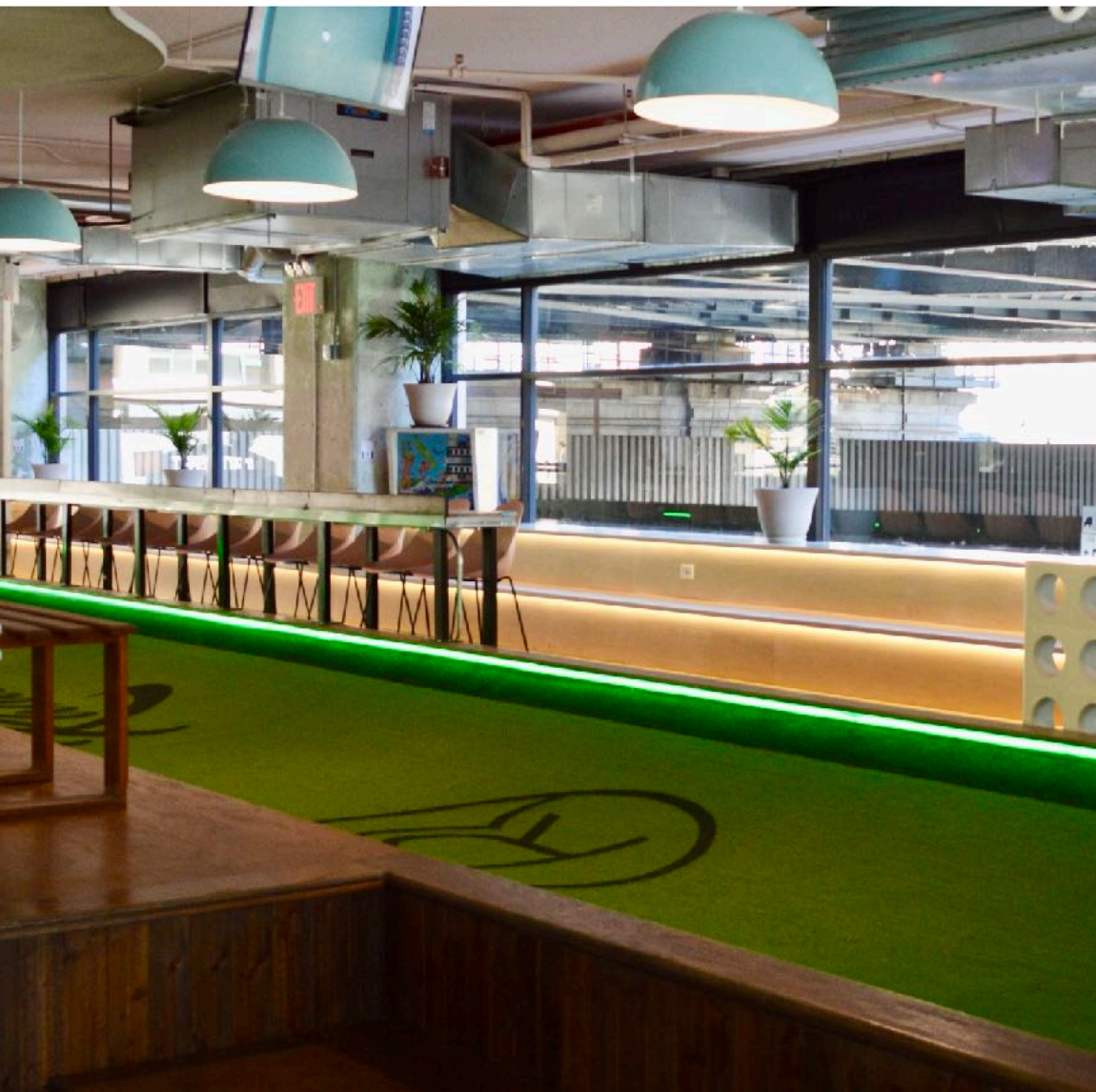
LARGE STADIUM BENCH + GENTS RAIL & COUNTER STOOLS,
NEXT TO THE BAR, OVERLOOKING FEATHER BOWLING
COURTS, THE REST OF THE GAME ROOM & A BUNCH OF TVs
(2 OF WHICH ARE DEDICATED)

GOOD FOR:

HOME BASE FOR DRINKS & SHARED BITES ADJACENT TO
FEATHER BOWLING (DEFINITELY THINK ABOUT BOOKING A
LANE TO GO WITH THIS SPACE!)

SPACE FEE = \$400 FOR 3HRS

NO MINIMUM SPENDS OR OTHER REQUIREMENTS





CORNER COURT

- GAME ROOM SIDE -
UP TO 40 PPL

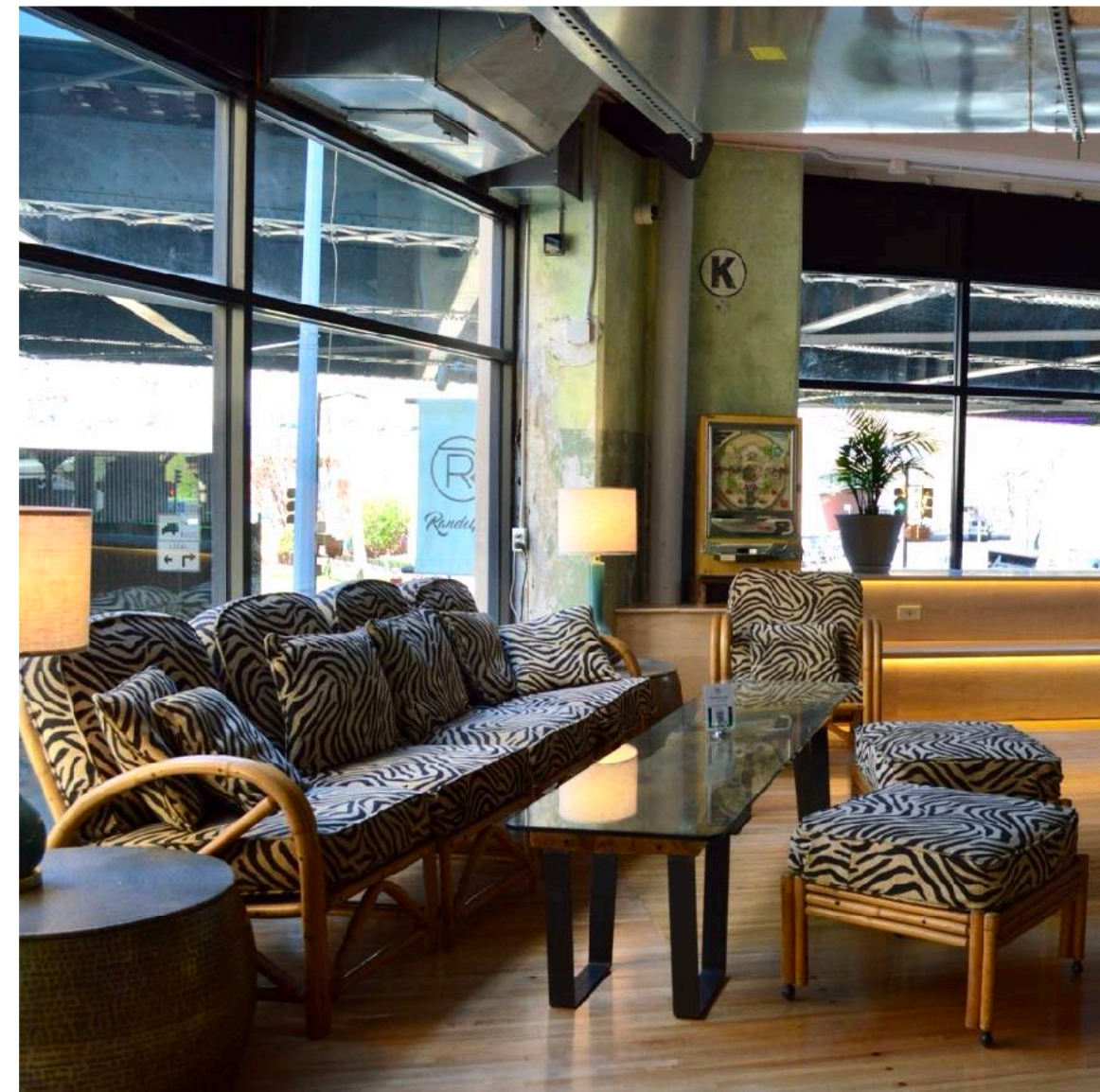
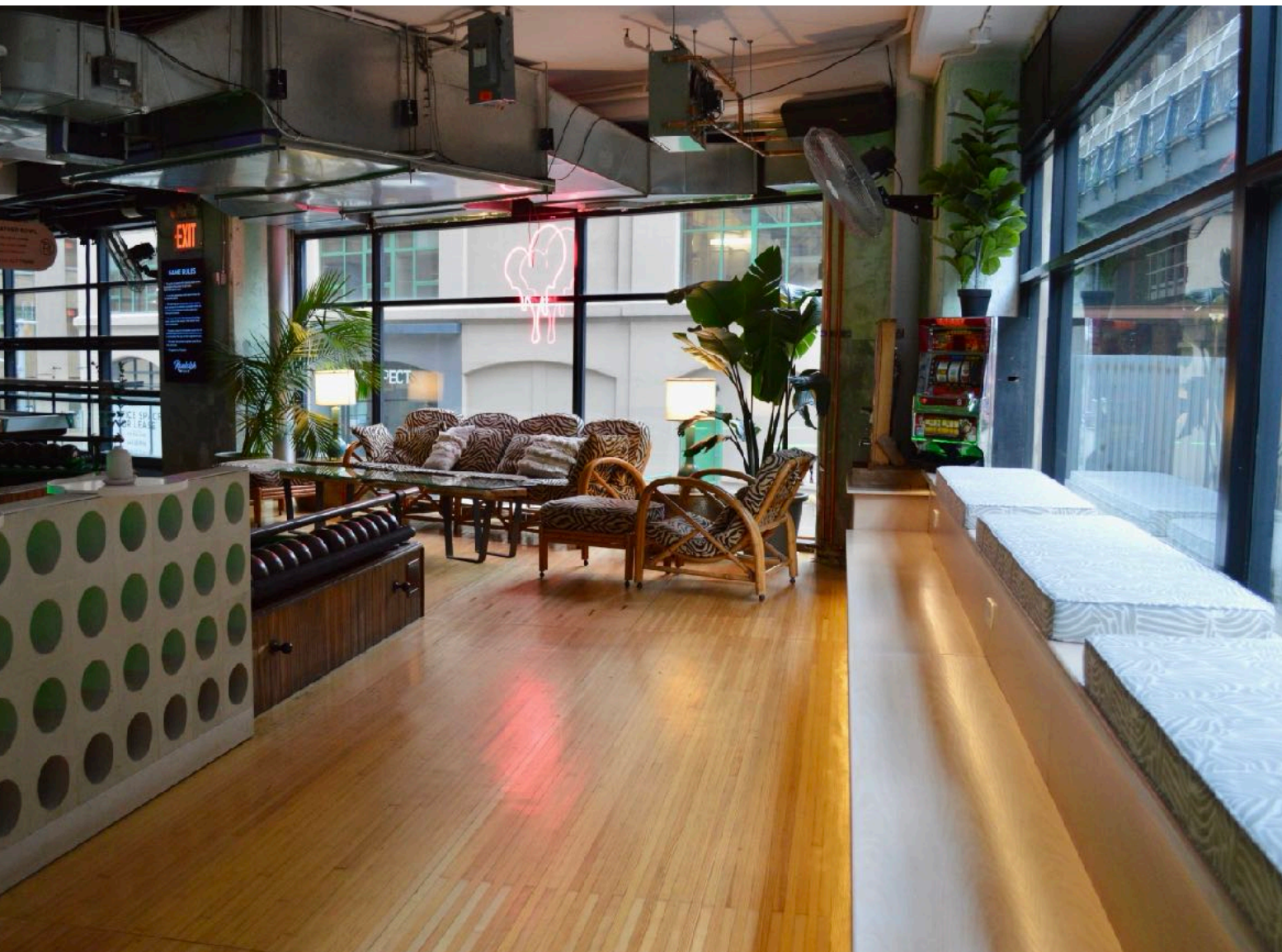
COUCH + LARGE STADIUM BENCH RIGHT AT THE ENTRANCE
OF THE FEATHER BOWLING COURTS AND LOOKING OUT AT
THE WHOLE GAME ROOM + A 70" DEDICATED TV

GOOD FOR:

HOME BASE FOR FEATHER BOWLING, DRINKS & SHARED
BITES (BOOK A LANE WITH THIS SPACE FOR SURE!)

SPACE FEE = \$400 FOR 3HRS

NO MINIMUM SPENDS OR OTHER REQUIREMENTS



ARCADE ALLEY

GAME ROOM SIDE
UP TO 30 PPL

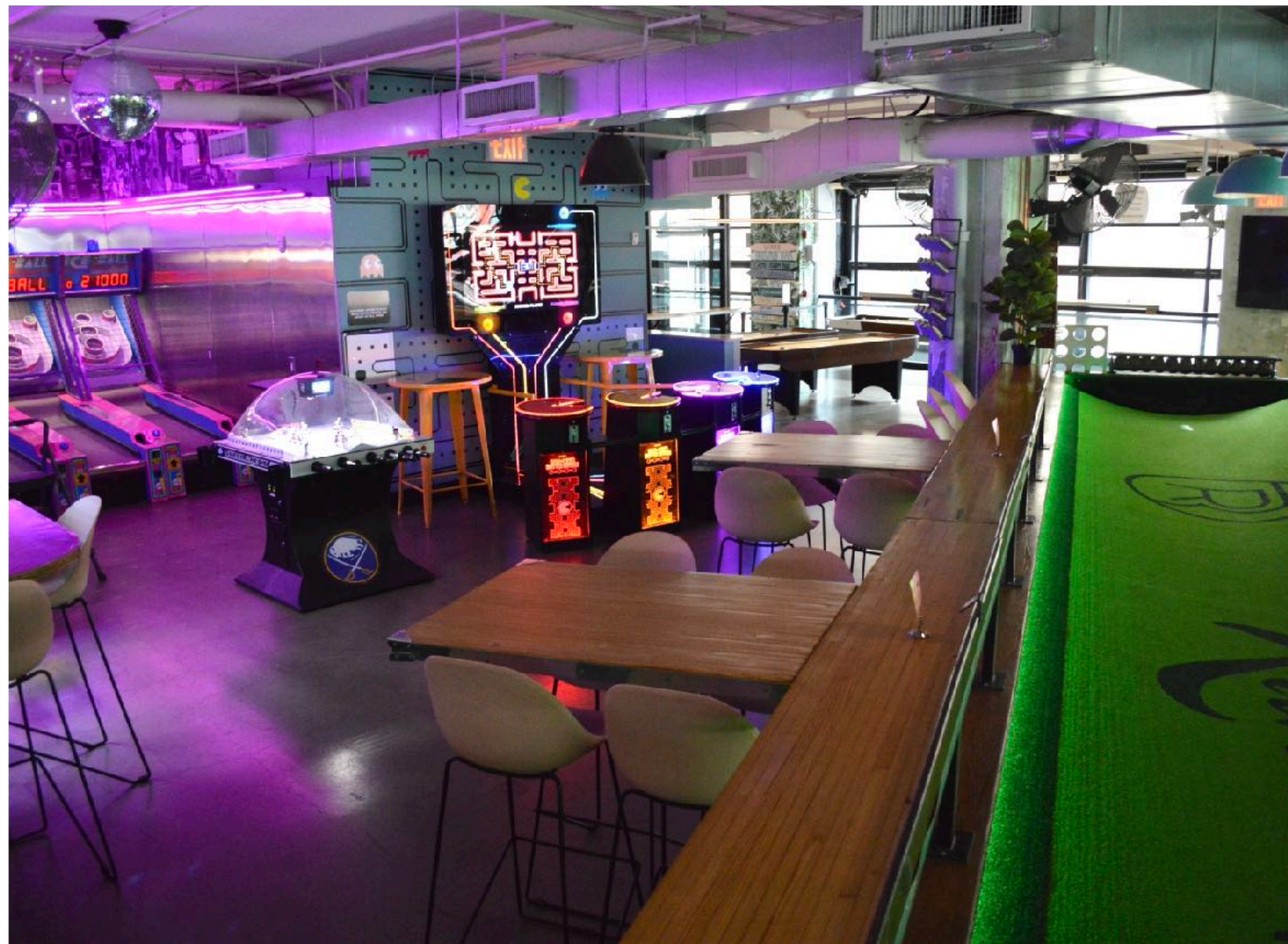
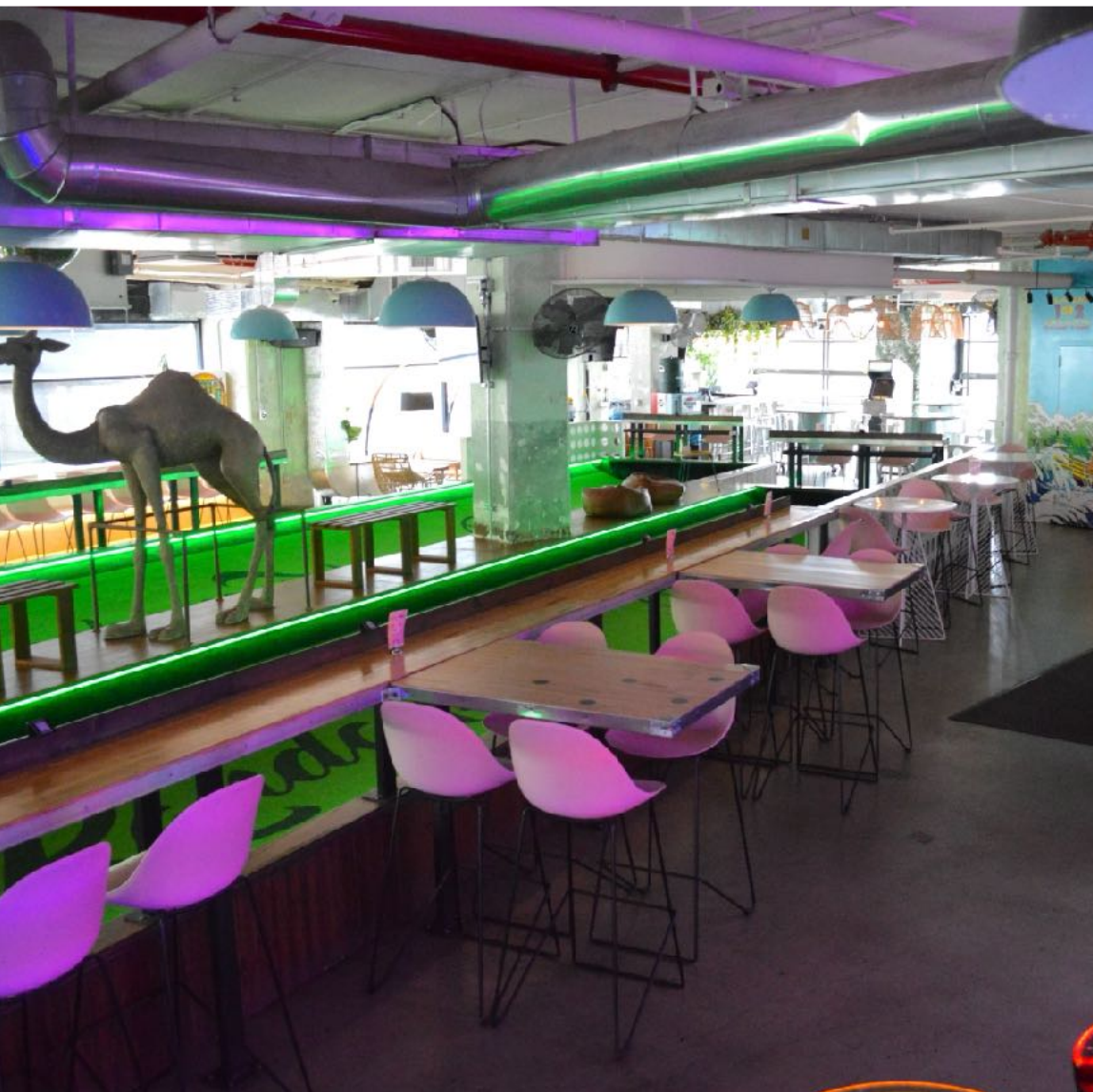
2 HI TOPS + GENTS RAIL SEATING SANDWICHED BETWEEN
FEATHER BOWLING COURTS AND THE ARCADE. INCLUDES A
50" DEDICATED TV + 3 70" TVs RIGHT NEAR BY

GOOD FOR:

DRINKS & SHARED BITES FOR GROUPS THAT ARE GAME
HEAVY AND/OR WANT TO BE NEAR TVs (THINK ABOUT
BOOKING A COURT WITH THIS SPACE!)

SPACE FEE = \$300 FOR 3HRS

NO MINIMUM SPENDS OR OTHER REQUIREMENTS





MEZZ-OVERLOOK

- BREW PUB SIDE -
UP TO 40 PPL

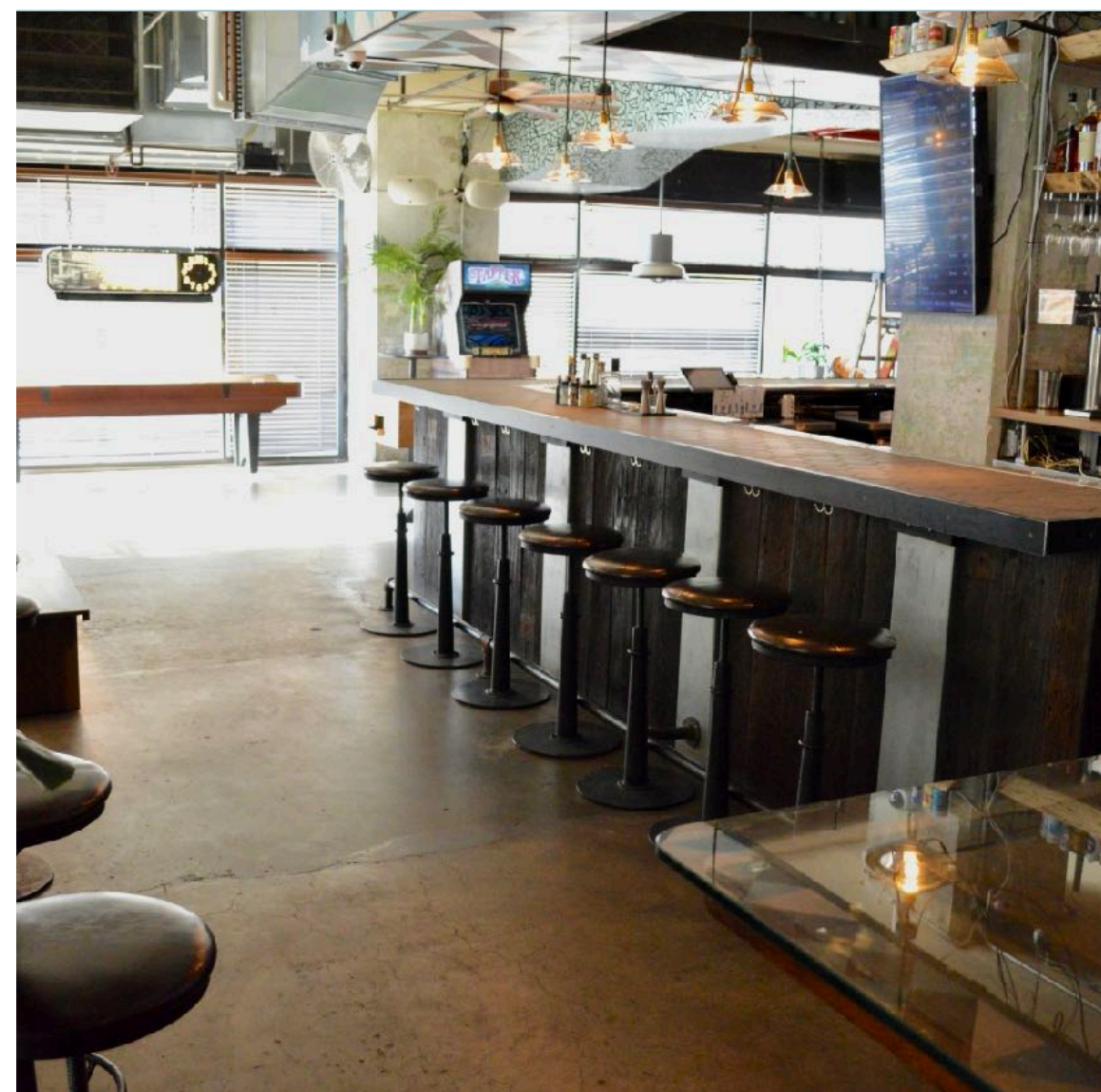
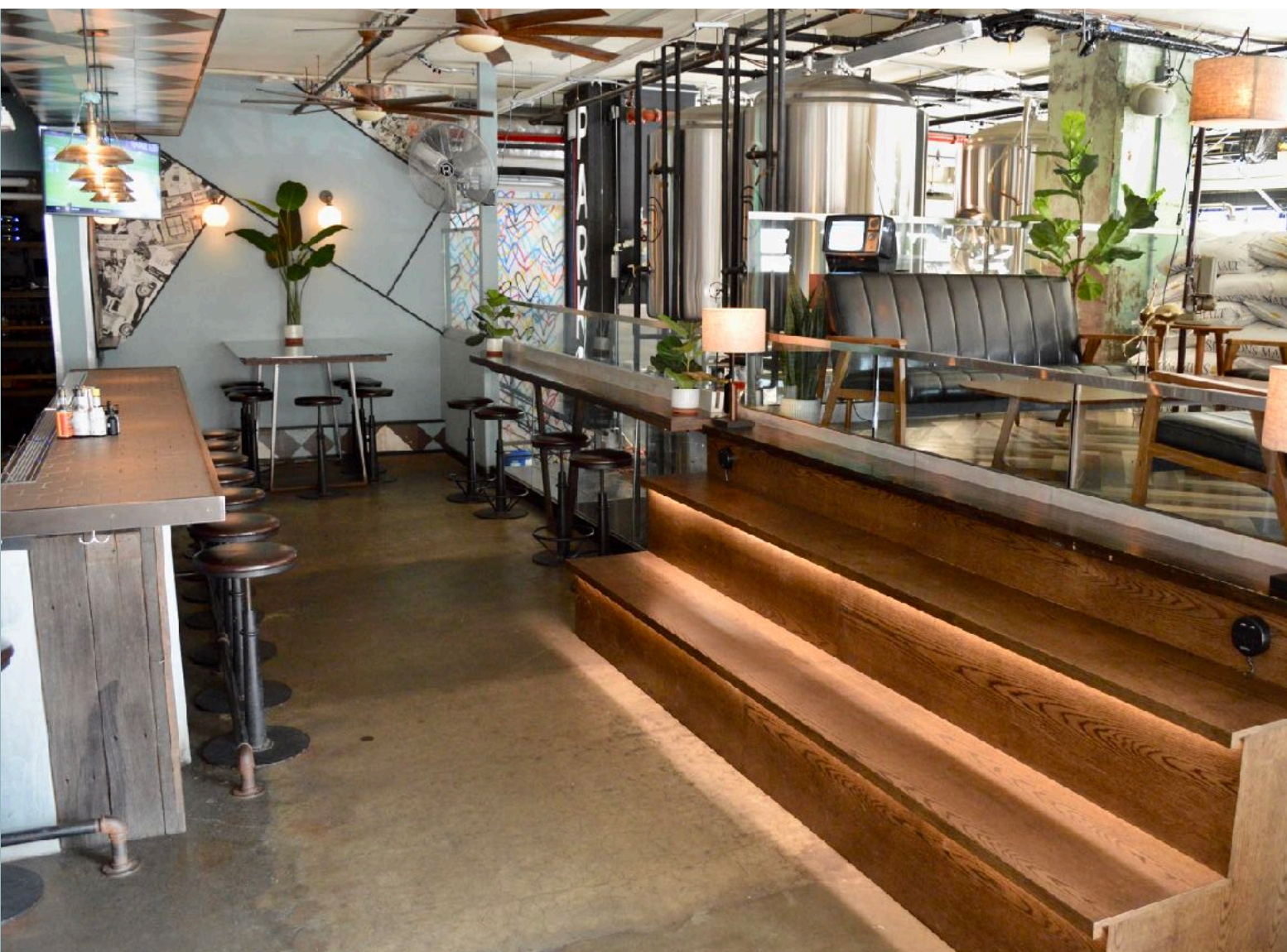
LARGE NOOK + ADJOINING MEZZANINE ALL OVERLOOKING THE BREWERY. INCLUDES A DEDICATED SIDE OF THE MAIN BAR, SOME COUCHES, A STADIUM SEATING BENCH, AN 8-SEATER HIGH TOP TABLE + DEDICATED TV

GOOD FOR:

GROUPS WANTING THAT 'SECTION OF THE BAR' SITUATION FOR DRINKS & BITES (OR JUST DRINKS) IN A SPACE FROM WHICH ONE COULD LITERALLY TOUCH THE BREWERY

SPACE FEE = \$450 FOR 3HRS

NO MINIMUM SPENDS OR OTHER REQUIREMENTS



THE STUDY

- BREW PUB SIDE -
UP TO 40 PPL

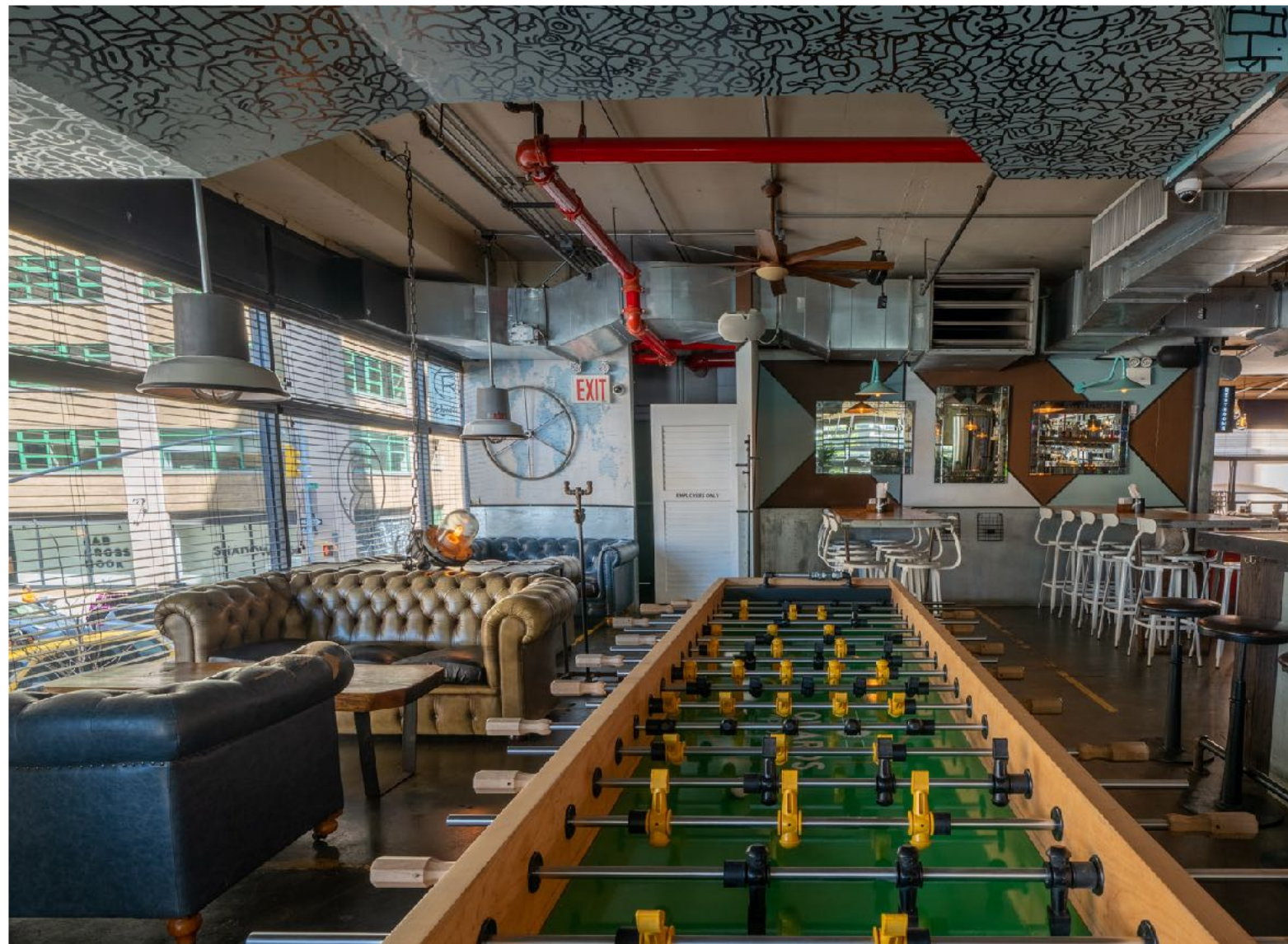
COMFORTABLE CORNER SECTION WITH CHESTERFIELD
COUCH SEATING + LARGE HI TOP TABLE WITH A GRACEFUL
OVERFLOW TO THE MAIN BAR AREA

GOOD FOR:

DRINKS & FOOD FOR GROUPS THAT WANT TO MIX/MINGLE
BETWEEN SITTING & STANDING, HAVE EASY ACCESS TO THE
BAR, THE SELF POUR BEER WALL AND A GIANT FOOSBALL
TABLE, IF THATS YOUR THING!

SPACE FEE = \$450 FOR 3HRS

NO MINIMUM SPENDS OR OTHER REQUIREMENTS





THE ROOFTOP

SEASONAL & WEATHER DEPENDENT
21+

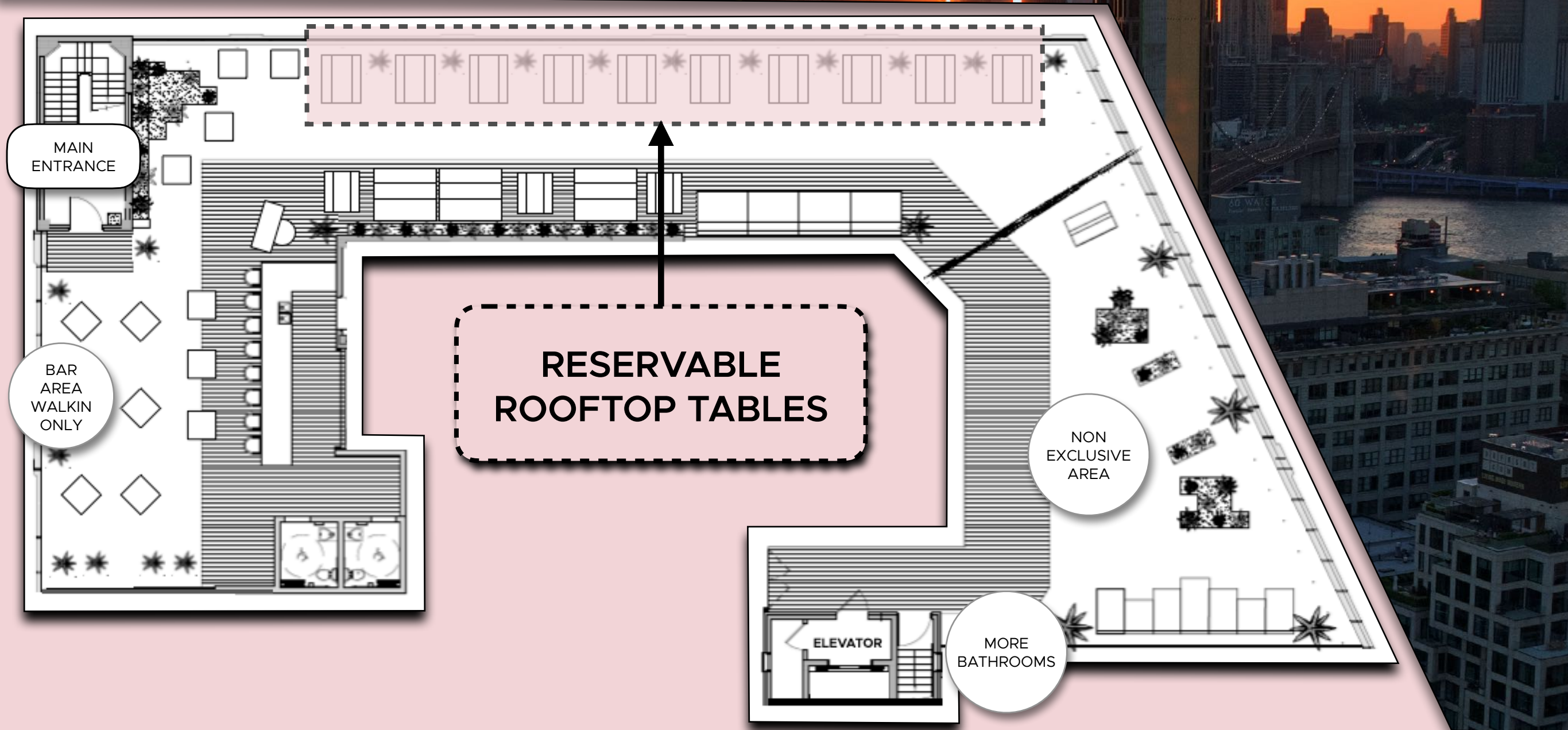
HOURS:

THURSDAY 4PM - 11PM

FRIDAY 4PM - 12AM

SATURDAY 3PM - 12AM

SUNDAY 3PM - 9PM





ROOFTOP TABLE

UP TO 10 PPL

BEER GARDEN TABLE POSITIONED AGAINST THE GLASS RAILING FACING MANHATTAN ACROSS THE EAST RIVER

GOOD FOR:

GROUPS THAT WANT TO RESERVE A HOME BASE ON THE ROOFTOP WITH UNOBSTRUCTED, PHENOMENAL VIEWS

\$375 = 3HR BOOKING +1 MIXED DRINK TUB

(5 randolph beers + 5 rubi hard seltzers + 5 archer roose wines)

NO MINIMUM SPENDS OR OTHER REQUIREMENTS.

4 TABLES MAXIMUM PER GROUP





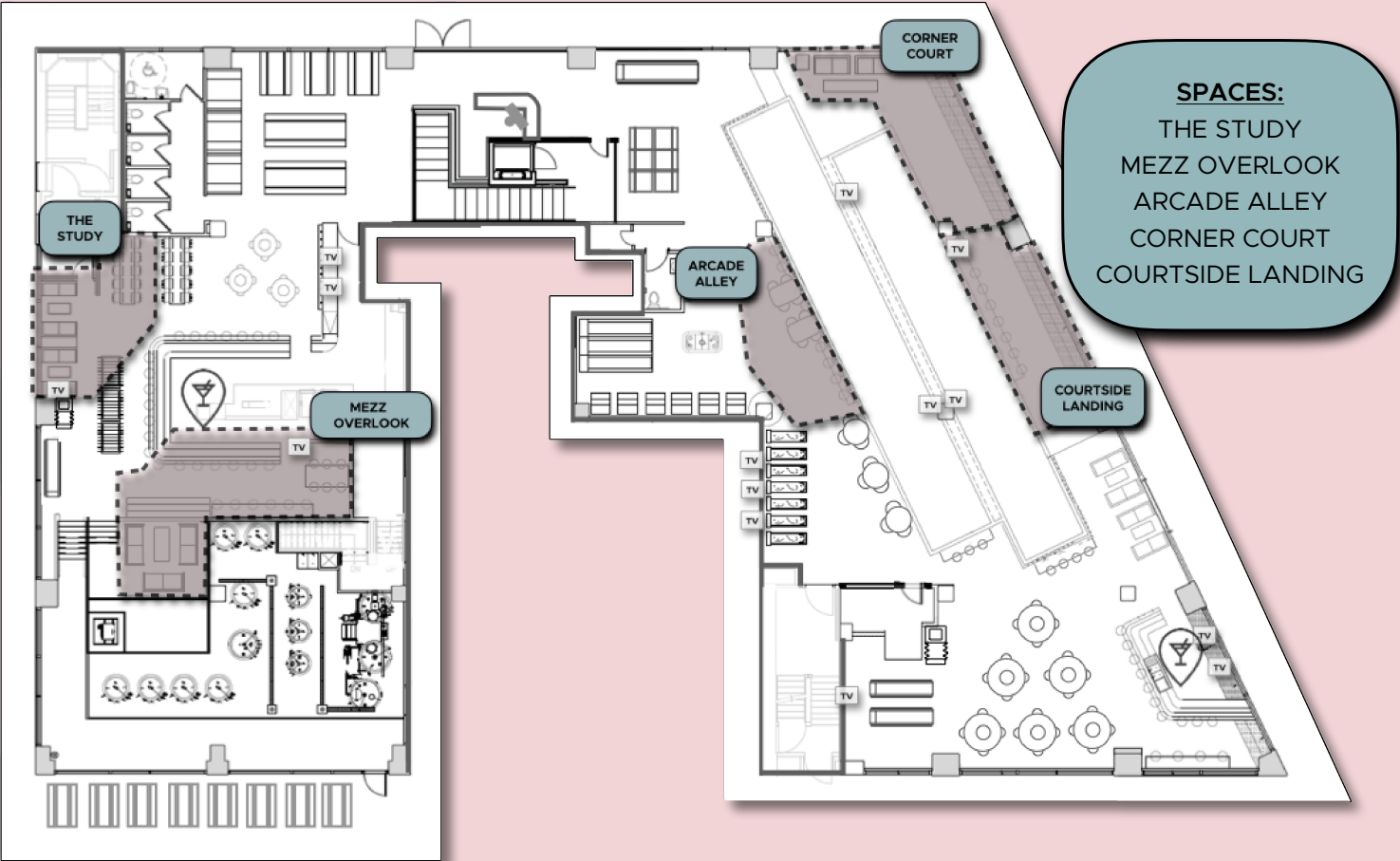
OUR ROOFTOP IS ALL OUTDOORS

DURING RAIN AND UNSAFE WEATHER
CONDITIONS, WE ARE REQUIRED
TO CLOSE THE ROOFTOP

INSURANCE HOLD

AVAILABLE FOR ROOF BOOKINGS
BETWEEN 20 AND 40 PPL

ADD INSURANCE TO TAKE ONE OF OUR INDOOR SPACES OFF THE MARKET
INCASE THE ROOFTOP CLOSSES DUE TO WEATHER



IF YOU END UP INDOORS, THE ROOF TABLE FEE GETS REFUNDED TO YOU,
LESS THE INDOOR SPACE FEE + THE INSURANCE HOLD

INDOOR SPACE	INSURANCE HOLD	SPACE FEE
THE STUDY (up to 40ppl)	\$200	\$450
MEZZ OVERLOOK (up to 40ppl)	\$200	\$450
COURTSIDE LANDING (up to 40ppl)	\$175	\$400
CORNER COURT (up to 30ppl)	\$175	\$400
ARCADE ALLEY (up to 30ppl)	\$150	\$300

INSURANCE HOLD EXAMPLE

APPLICABLE TO ROOFTOP BOOKINGS ONLY

-
1. GROUP OF 30 PPL, BOOK 3 ROOF TABLES
 2. INSURANCE HOLD ON CORNER COURT
-

PAID AT BOOKING

\$1,125 3 ROOF TABLES @ \$375 PER

\$175 INSURANCE HOLD ON CORNER COURT

\$1,300 TOTAL

***WEATHER IS GREAT
EVENT IS ON THE ROOF!***


\$1,300 TOTAL: ROOF TABLE FEE + INSURANCE

***ITS RAINING
EVENT MOVES INSIDE
TO CORNER COURT***

\$1,300 REFUND ROOF TABLES + INSURANCE

-\$400 LESS: CORNER COURT SPACE FEE

\$900 AMOUNT REFUNDED



WE HOPE TO
SEE YOU SOON!