



Hello

Thanks for reaching out about hosting your group at Randolph!

We have 5 unique, indoor spaces which are perfect for casual gatherings. We also have a few bookable rooftop tables (seasonal & weather dependent) which work in a similar way.

Lets find whats right for you!



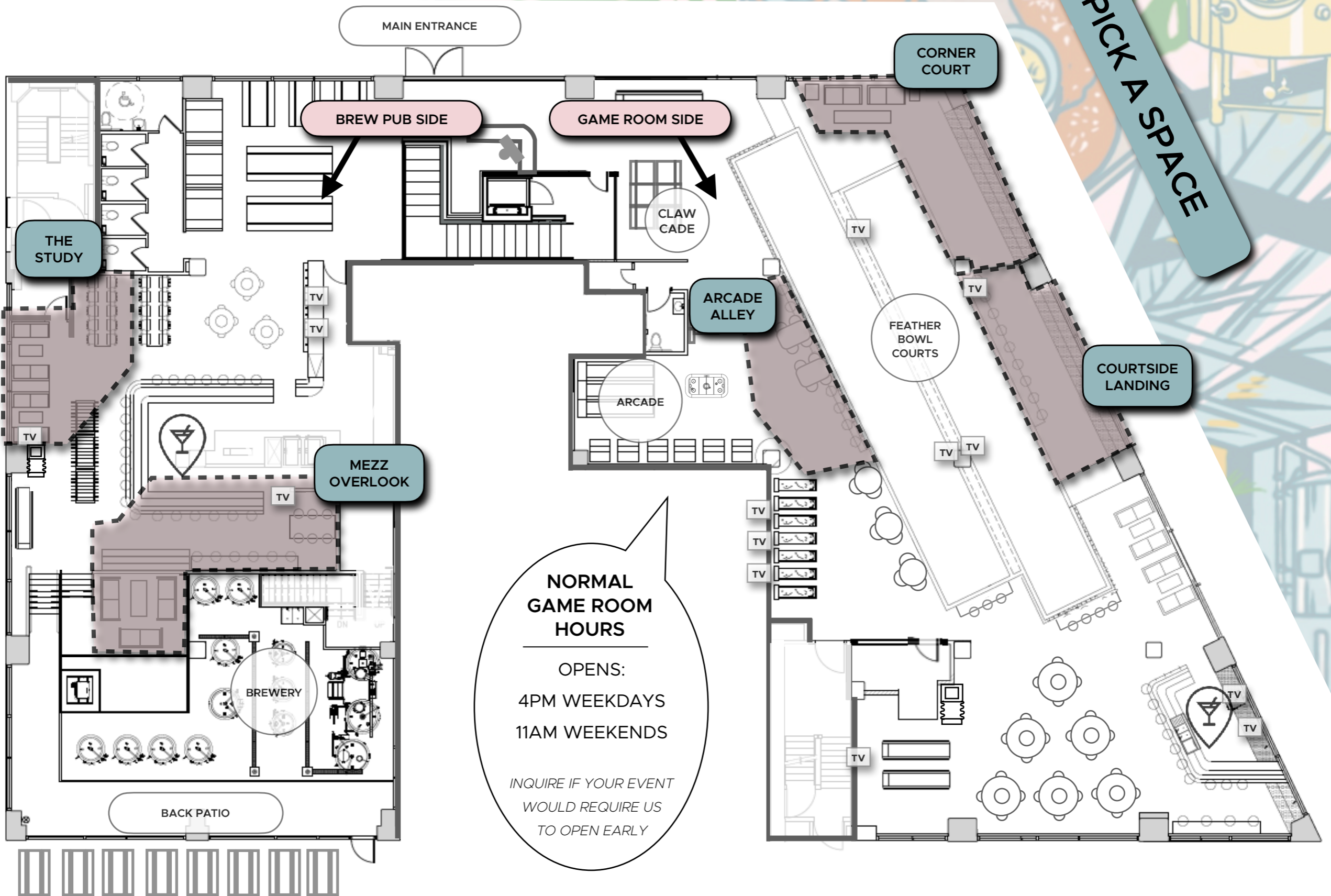
*Randolph*



# INDOOR CASUAL GATHERING SPACES

## 1. CONSIDER A SIDE

## 2. PICK A SPACE



### NORMAL GAME ROOM HOURS

OPENS:  
4PM WEEKDAYS  
11AM WEEKENDS

*INQUIRE IF YOUR EVENT  
WOULD REQUIRE US  
TO OPEN EARLY*



**GET THE PARTY  
STARTED RIGHT...**

TUBS HAVE TO BE ORDERED  
3 DAYS IN ADVANCE

## PARTY TUB SPECIALS

READY RIGHT WHEN YOU WALK IN + SAVE ABOUT 10%

### BEER TUB

16 randolph cans (16oz)  
assorted styles, 4 of each

**\$135**

### HARD SELTZER TUB

16 rubi cans (12oz)  
cherry lime, margarita, mai tai, white sangria

**\$105**

### WINE TUB

9 archer roose cans (8.5oz)  
3 sauv blanc, 3 malbec, 3 bubbly

**\$125**

### MIXED BEER/WINE/SELTZER TUB

5 randolph beers + 5 rubi cans + 5 archer roose wines

**\$140**

**BUT DON'T  
SWEAT IT!**

WE HAVE 2 FULL BARS THAT  
SERVE UP EVERYTHING  
ON THE SPOT  
(EXCEPT PARTY TUBS ;))



# PARTY PLATTERS

## LITE BITES

GUAC & CHIPS (V) ★   house guac, roasted green salsa	70
LOADED NACHOS 🌱 ★   sour cream, guac, pepper jack, black bean, jalapeno	75
FRY SAMPLER (V)   waffle + sweet potato + tots   spicy mayo, sweet chili, ranch	75
POTATO CROQUETTES 🌱   truffle	75
BEER GARDEN PRETZELS (V)   smoked sea salt, mustard	75
SPRING ROLLS (V)   veggies & soy, scallion	75
PIGS IN A BLANKET   beef, everything bagel seasoning, mustard	75
HUMMUS PLATTER (V) (GF)   chili oil, fried chickpeas, w/ veggies	75
SHISHITO PEPPERS (V) ★   lemon, soy, togarashi spice	75
WINGS ★   veggies, buttermilk ranch	80
CAULIFLOWER WINGS (V)   veggies, vegan ranch	80
<b>WING SAUCE OPTIONS</b>   buffalo, korean bbq, jerk, or mango habanero   choose one	

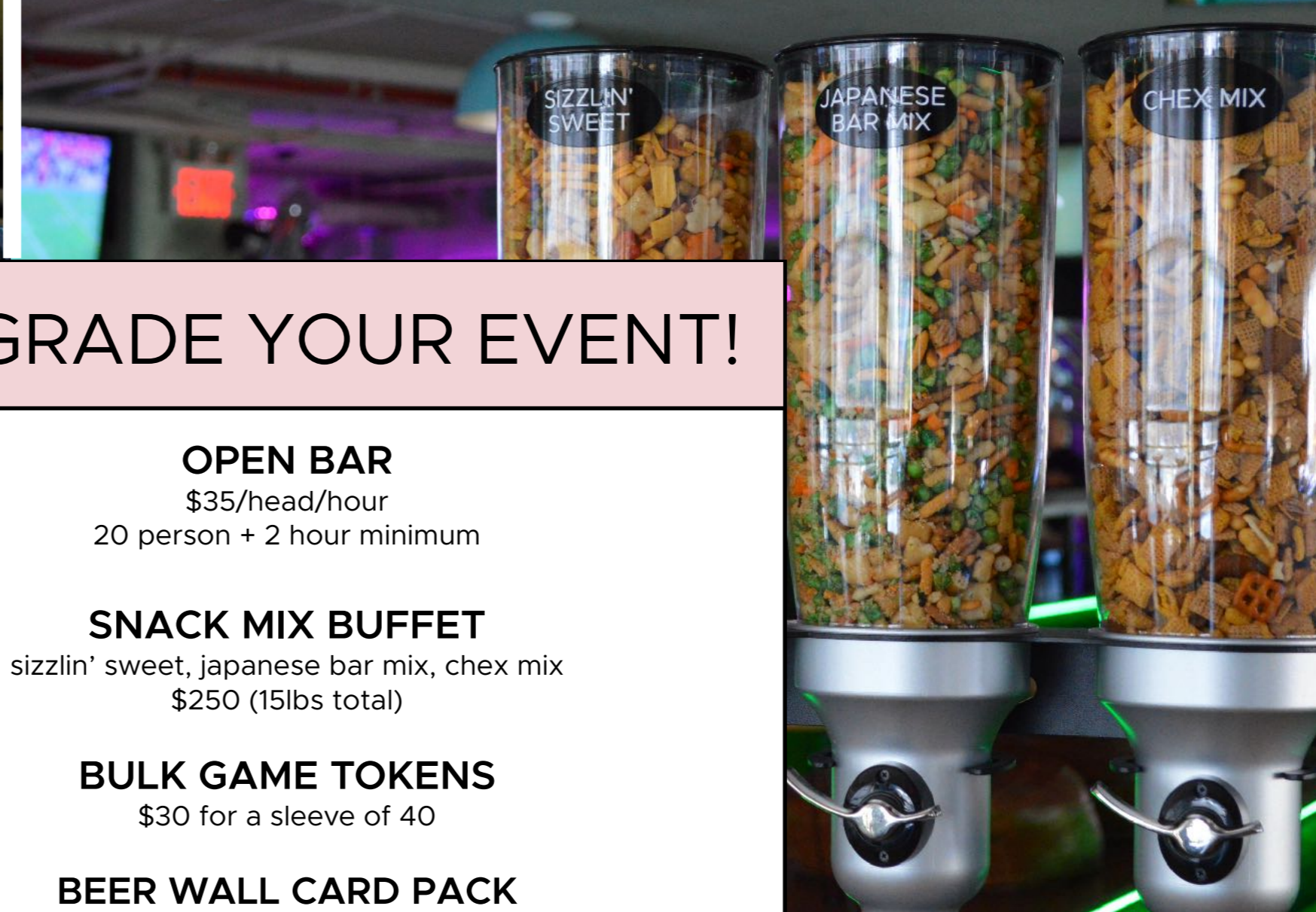
## MINI MAINS

16 CHEESEBURGER SLIDERS   american cheese, house aioli	85
16 FRIED CHICKEN SLIDERS   buttermilk, sweet pickle, mayo	85
16 GARDEN BURGER SLIDERS (V)   vegan goat cheese	85
20 PORK TAQUITOS ★   salsa verde	80
20 JERK JACKFRUIT TAQUITOS (V) ★   salsa verde	80
CRISPY COD NIBBLERS   tartar sauce	80
CHICKEN TENDIES   bbq sauce	80
VEGAN CHICK'N TENDIES (V)   bbq sauce	80

## TREATS

CHURRO PRETZELS 🌱   powdered sugar, Nutella	45
WARM DONUTS 🌱   buttercream dip	45
ROCKY ROAD BROWNIE BITES 🌱   nuts, chocolate drizzle	45





# UPGRADE YOUR EVENT!

## OPEN BAR

\$35/head/hour

20 person + 2 hour minimum

## SNACK MIX BUFFET

sizzlin' sweet, japanese bar mix, chex mix

\$250 (15lbs total)

## BULK GAME TOKENS

\$30 for a sleeve of 40

## BEER WALL CARD PACK

\$90 (5 cards @ \$20 pre-loaded)

## GUIDED BREWERY TASTING

\$1,250

## CUSTOM HARD SELTZER

your can design, your flavor choice

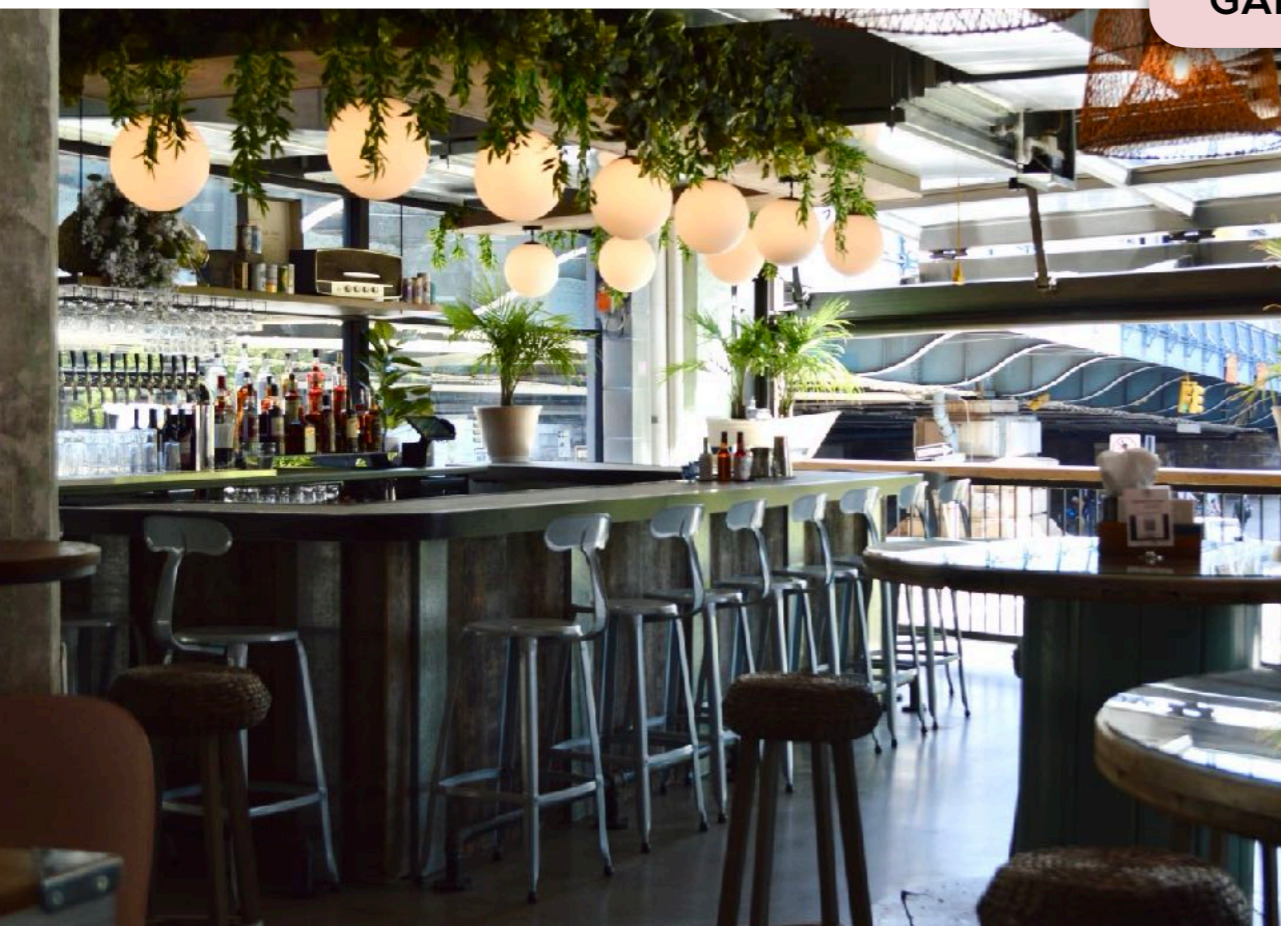
\$3,500 - 50 cases







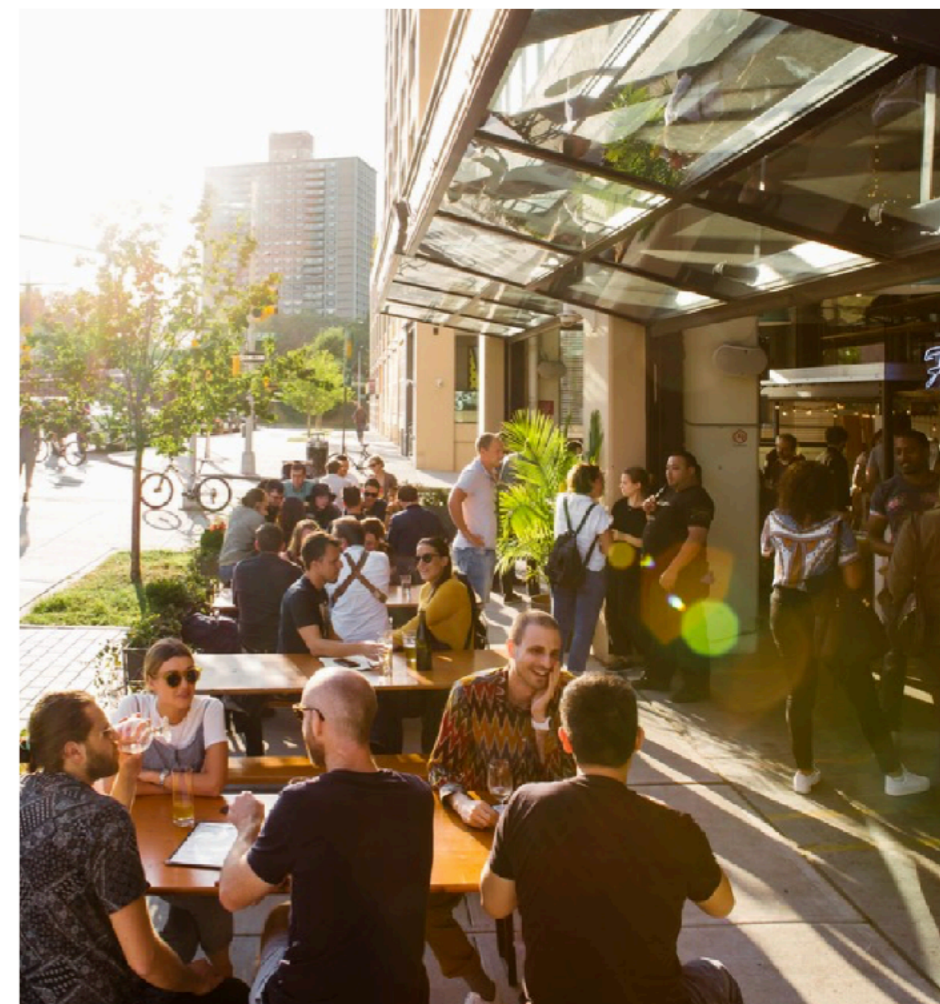
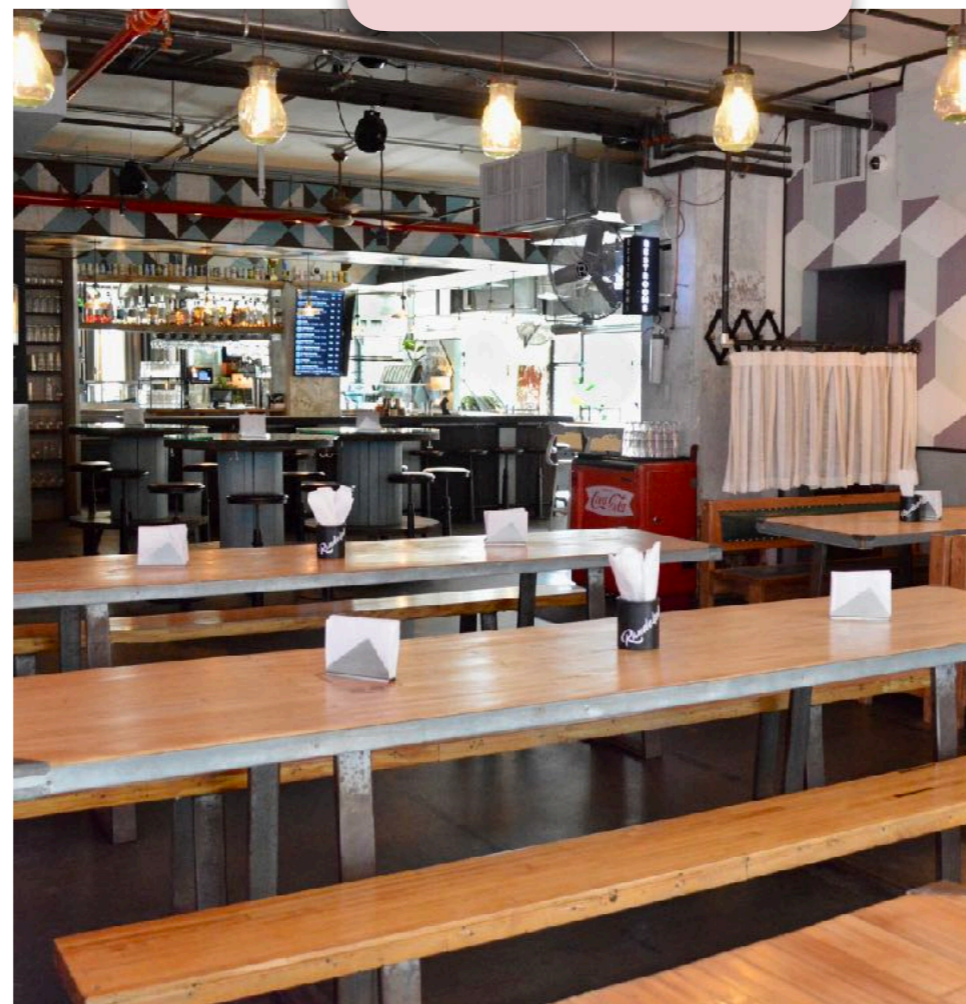
GAME ROOM VIBE







BREW PUB VIBE





# COURTSIDE LANDING

- GAME ROOM SIDE-  
UP TO 40 PPL

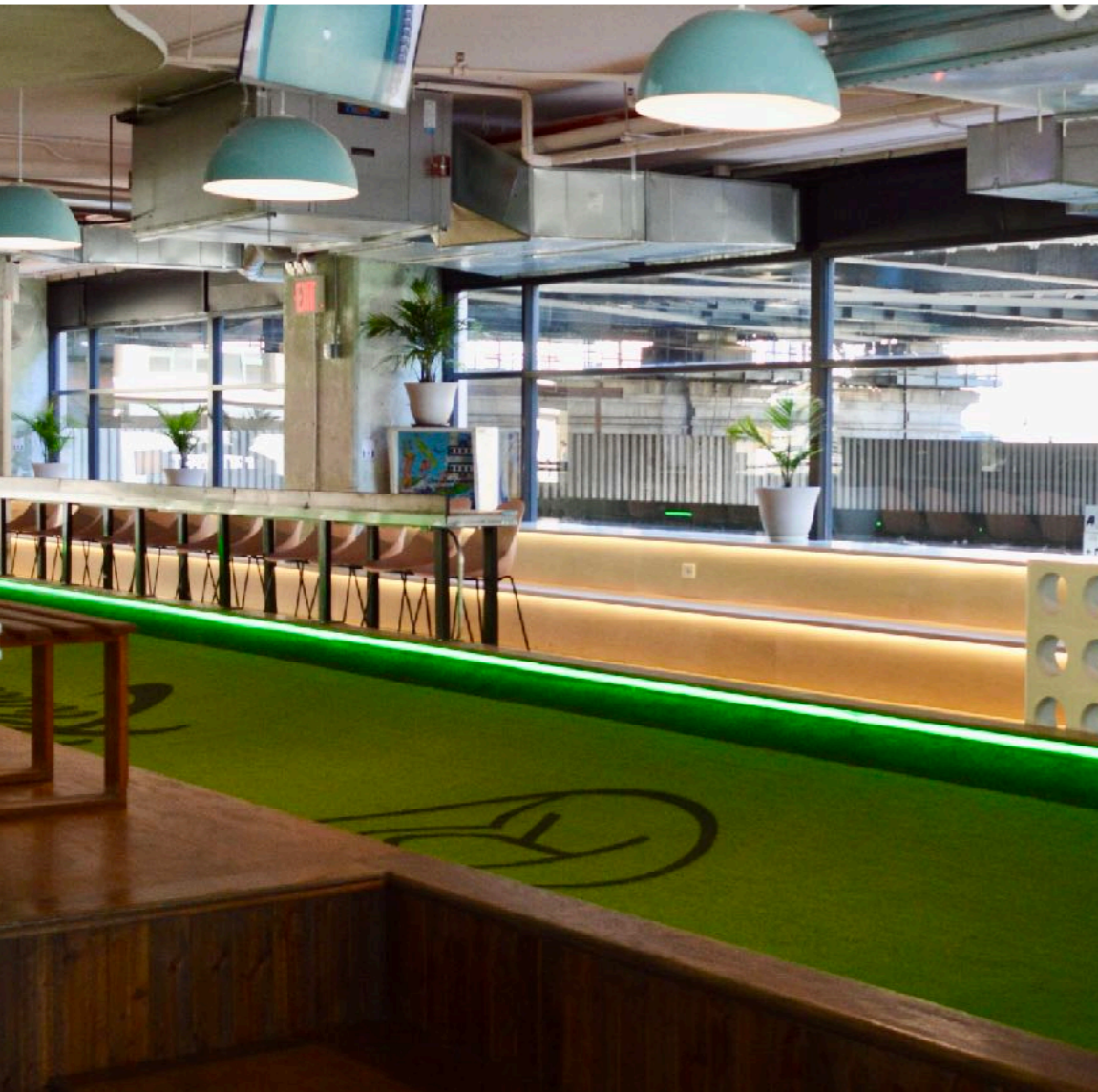
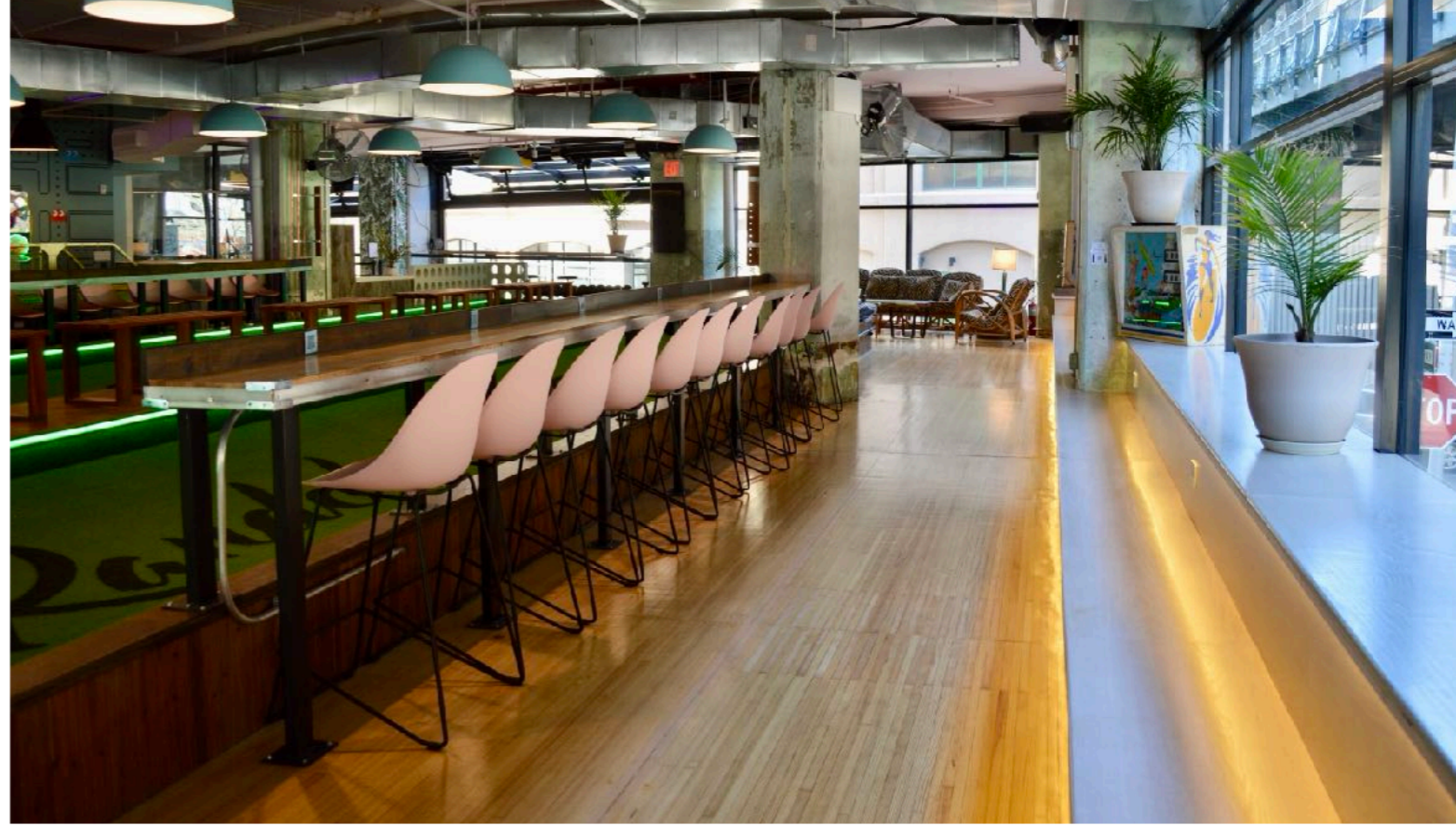
LARGE STADIUM BENCH + GENTS RAIL & COUNTER STOOLS,  
NEXT TO THE BAR, OVERLOOKING FEATHER BOWLING  
COURTS, THE REST OF THE GAME ROOM & A BUNCH OF TVs  
(2 OF WHICH ARE DEDICATED)

## GOOD FOR:

HOME BASE FOR DRINKS & SHARED BITES ADJACENT TO  
FEATHER BOWLING (DEFINITELY THINK ABOUT BOOKING A  
LANE TO GO WITH THIS SPACE!)

**SPACE FEE = \$400 FOR 3HRS**

NO MINIMUM SPENDS OR OTHER REQUIREMENTS







# CORNER COURT

- GAME ROOM SIDE -  
UP TO 40 PPL

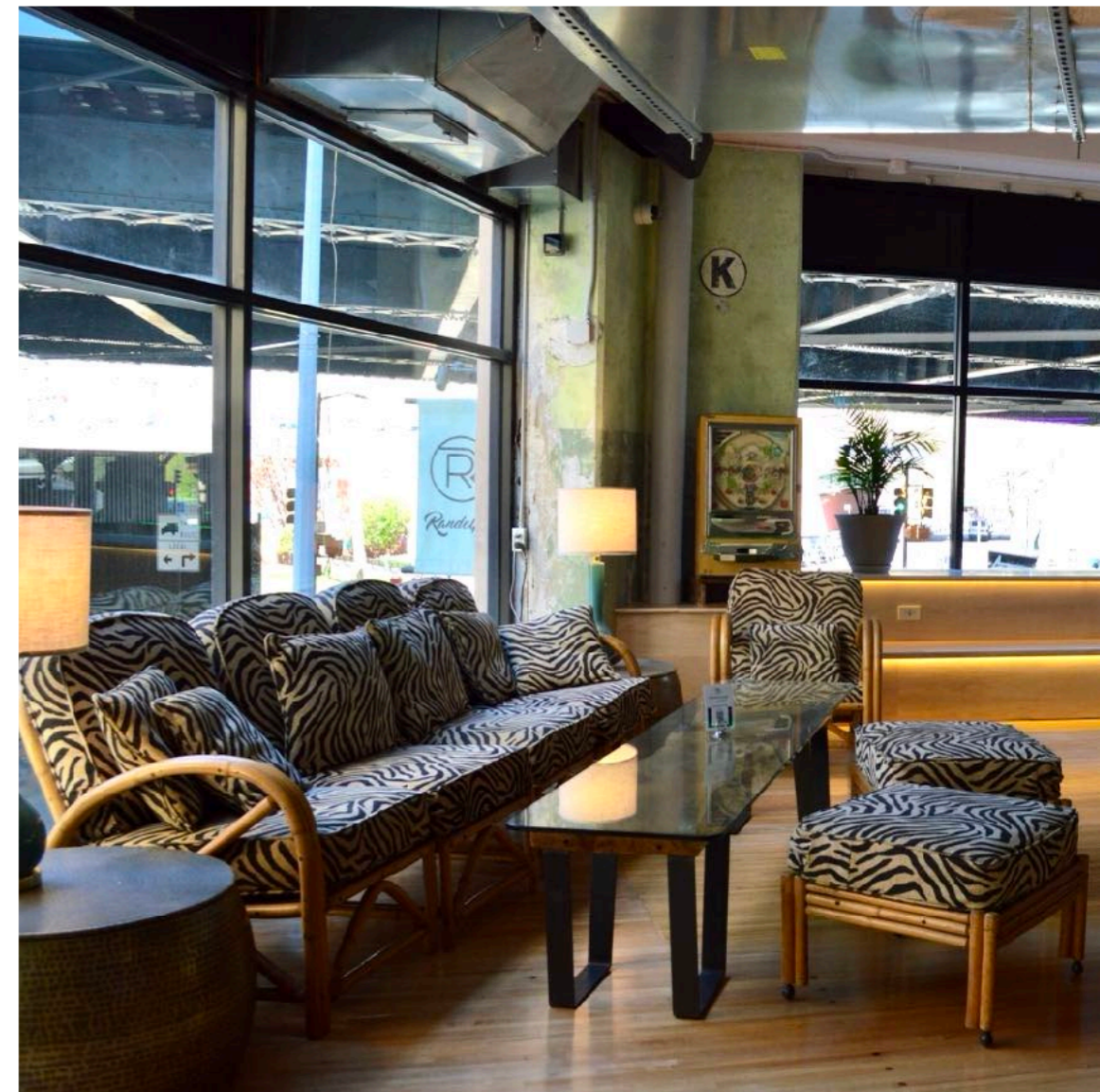
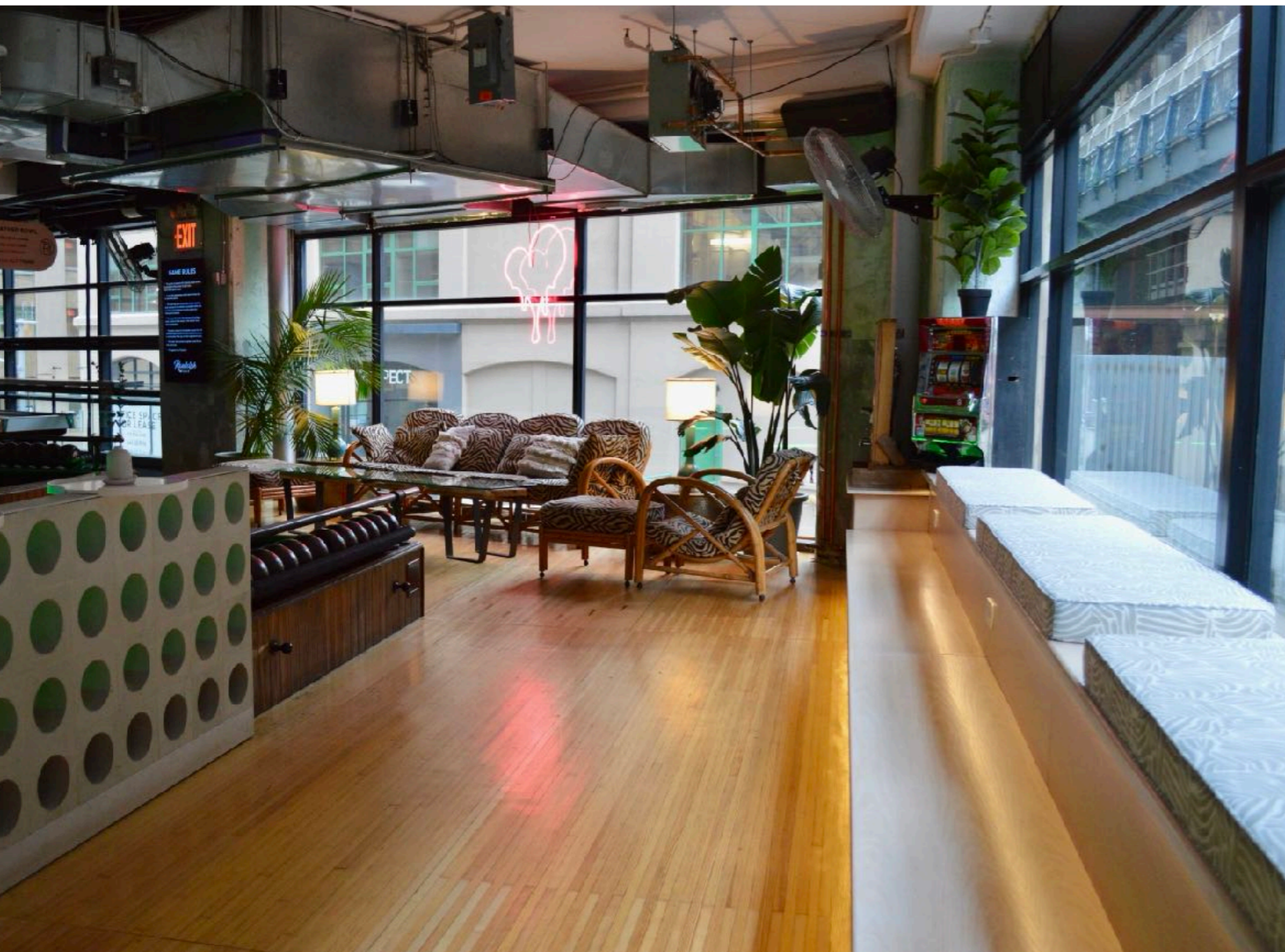
COUCH + LARGE STADIUM BENCH RIGHT AT THE ENTRANCE OF THE FEATHER BOWLING COURTS AND LOOKING OUT AT THE WHOLE GAME ROOM + A 70" DEDICATED TV

## GOOD FOR:

HOME BASE FOR FEATHER BOWLING, DRINKS & SHARED BITES (BOOK A LANE WITH THIS SPACE FOR SURE!)

**SPACE FEE = \$400 FOR 3HRS**

NO MINIMUM SPENDS OR OTHER REQUIREMENTS





# ARCADE ALLEY

GAME ROOM SIDE  
UP TO 30 PPL

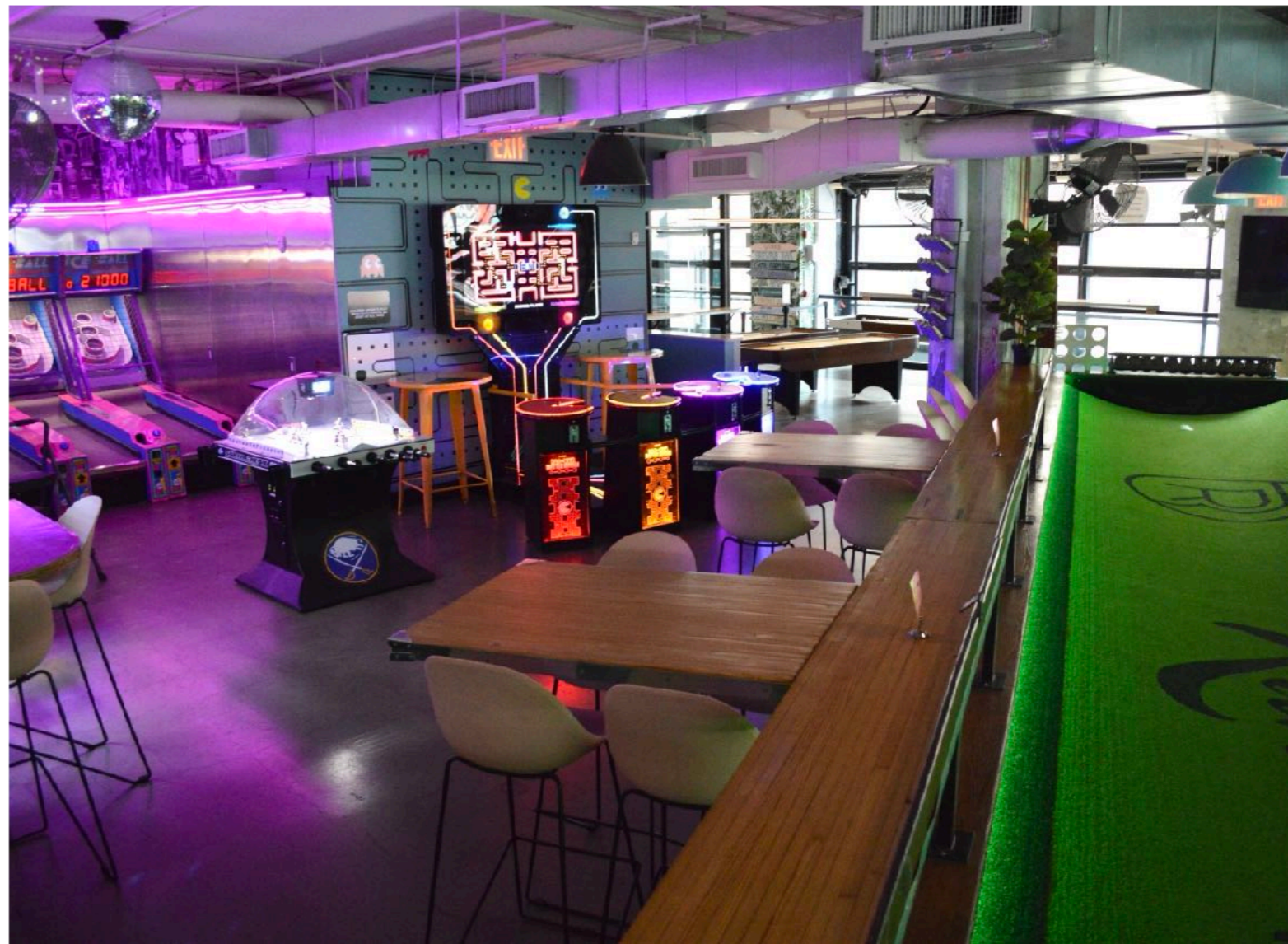
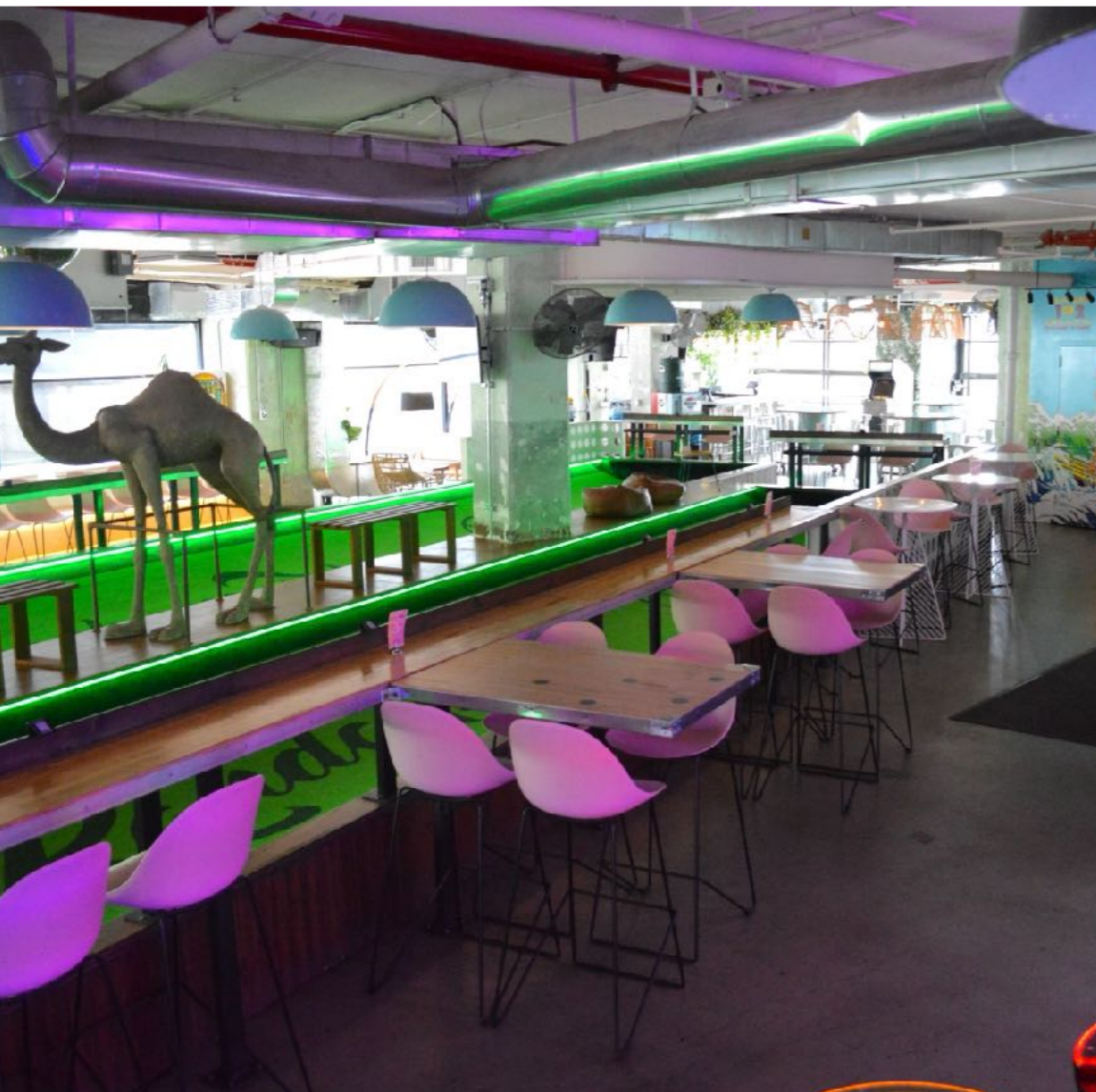
2 HI TOPS + GENTS RAIL SEATING SANDWICHED BETWEEN  
FEATHER BOWLING COURTS AND THE ARCADE. INCLUDES A  
50" DEDICATED TV + 3 70" TVs RIGHT NEAR BY

## GOOD FOR:

DRINKS & SHARED BITES FOR GROUPS THAT ARE GAME  
HEAVY AND/OR WANT TO BE NEAR TVs (THINK ABOUT  
BOOKING A COURT WITH THIS SPACE!)

**SPACE FEE = \$300 FOR 3HRS**

NO MINIMUM SPENDS OR OTHER REQUIREMENTS







# MEZZ-OVERLOOK

- BREW PUB SIDE -  
UP TO 40 PPL

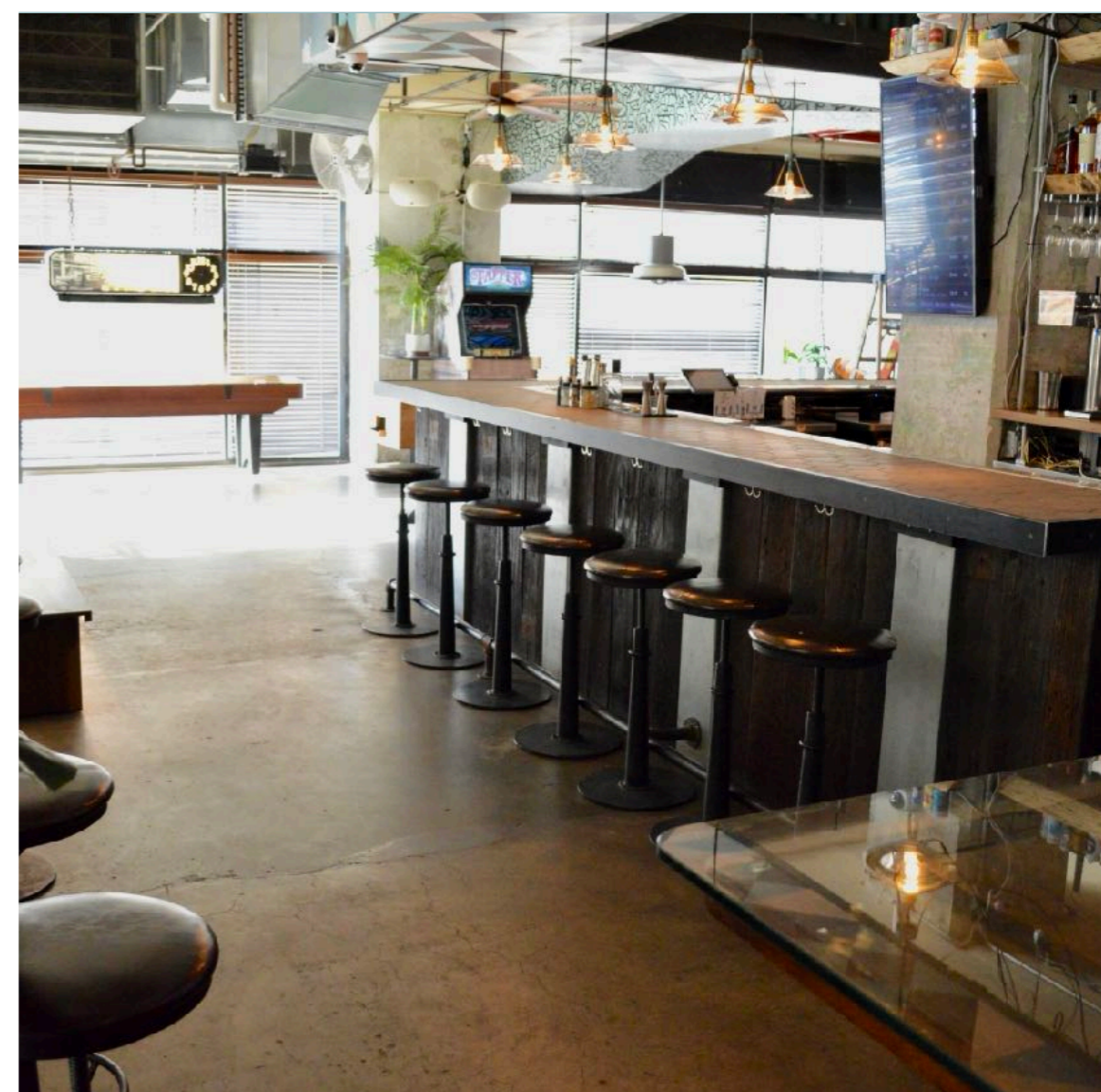
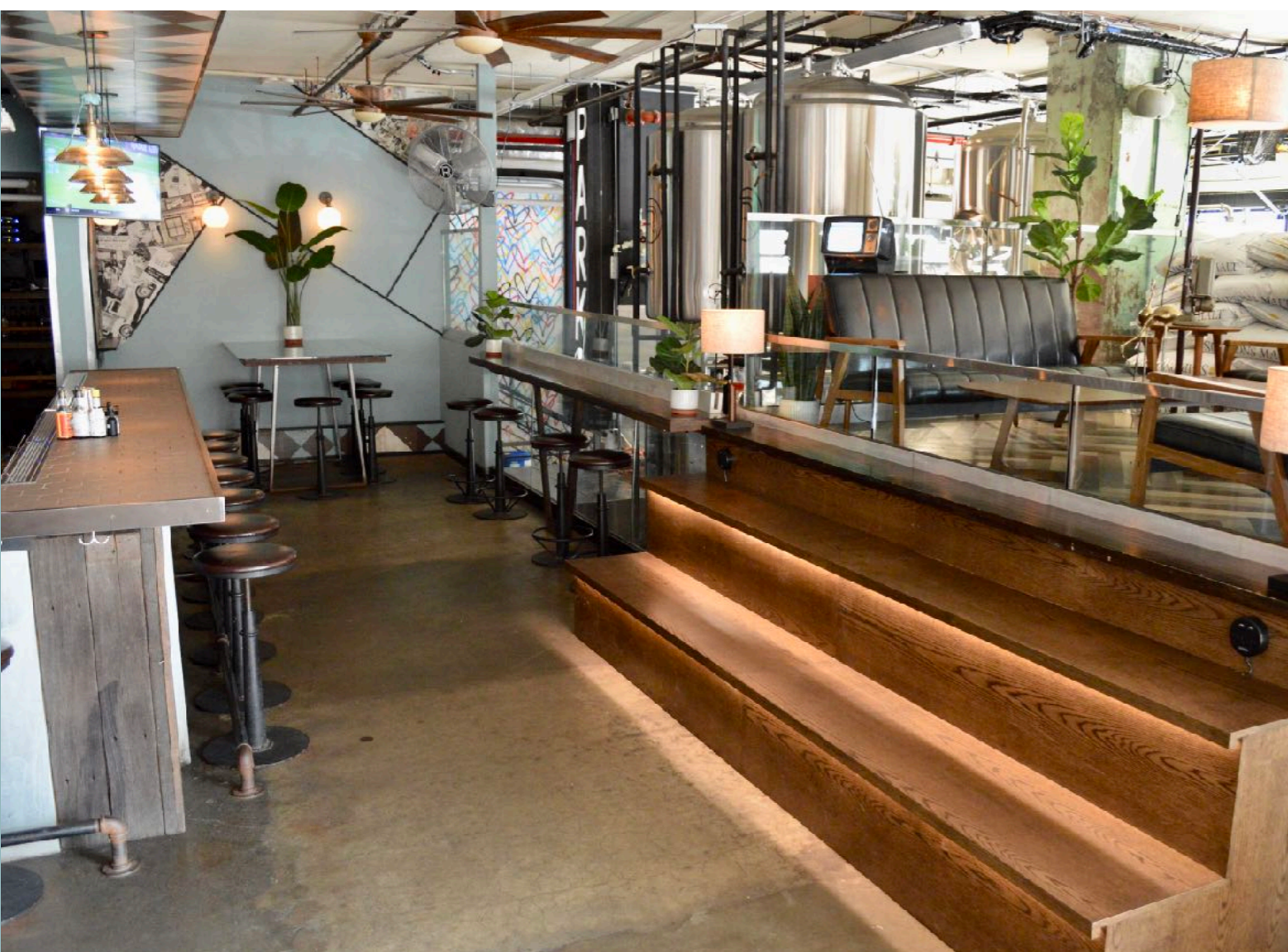
LARGE NOOK + ADJOINING MEZZANINE ALL OVERLOOKING THE BREWERY. INCLUDES A DEDICATED SIDE OF THE MAIN BAR, SOME COUCHES, A STADIUM SEATING BENCH, AN 8-SEATER HIGH TOP TABLE + DEDICATED TV

## GOOD FOR:

GROUPS WANTING THAT 'SECTION OF THE BAR' SITUATION FOR DRINKS & BITES (OR JUST DRINKS) IN A SPACE FROM WHICH ONE COULD LITERALLY TOUCH THE BREWERY

**SPACE FEE = \$450 FOR 3HRS**

NO MINIMUM SPENDS OR OTHER REQUIREMENTS





# THE STUDY

- BREW PUB SIDE -  
UP TO 40 PPL

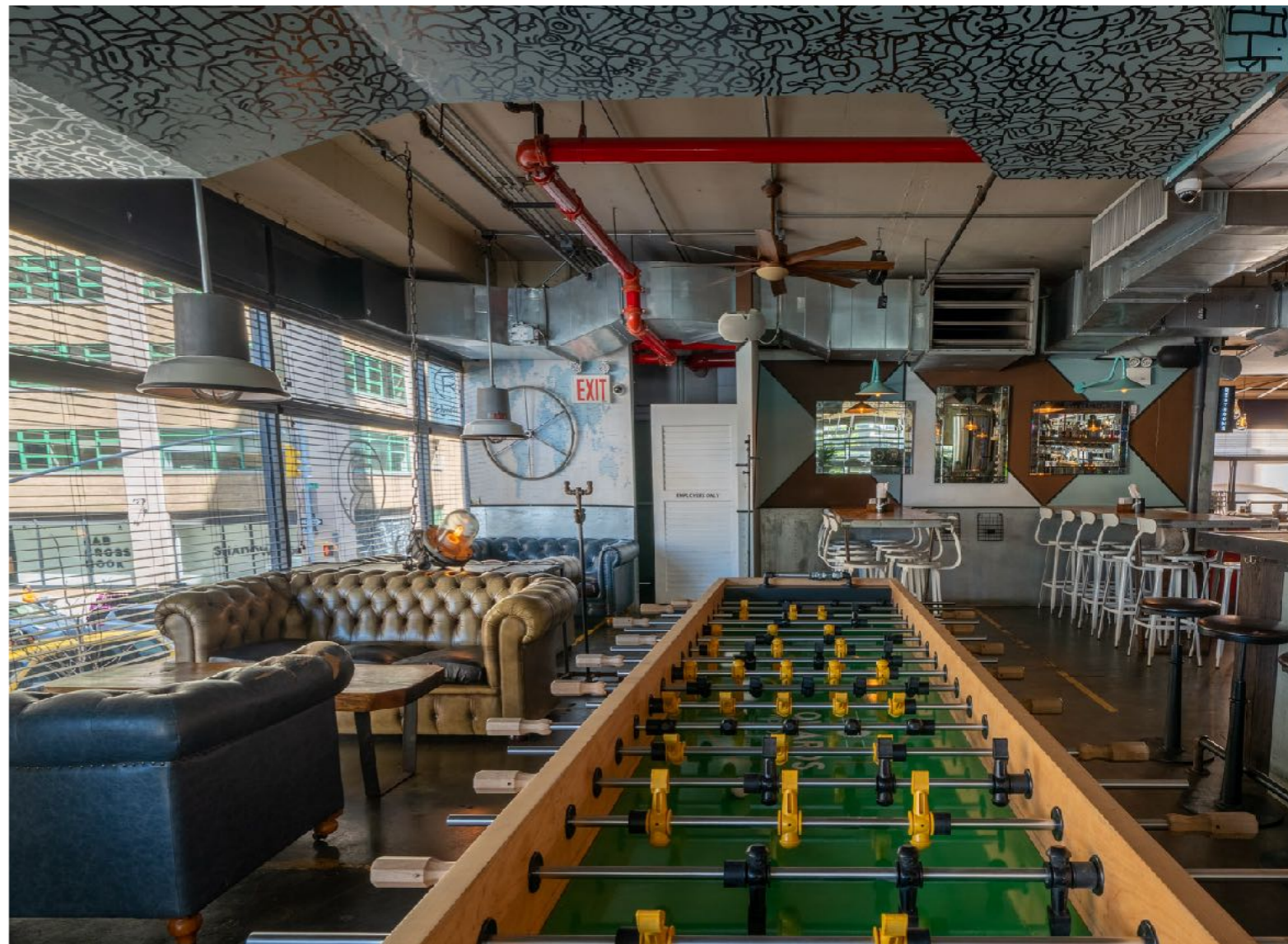
COMFORTABLE CORNER SECTION WITH CHESTERFIELD  
COUCH SEATING + LARGE HI TOP TABLE WITH A GRACEFUL  
OVERFLOW TO THE MAIN BAR AREA

## GOOD FOR:

DRINKS & FOOD FOR GROUPS THAT WANT TO MIX/MINGLE  
BETWEEN SITTING & STANDING, HAVE EASY ACCESS TO THE  
BAR, THE SELF POUR BEER WALL AND A GIANT FOOSBALL  
TABLE, IF THATS YOUR THING!

**SPACE FEE = \$450 FOR 3HRS**

NO MINIMUM SPENDS OR OTHER REQUIREMENTS







## THE ROOFTOP

*SEASONAL & WEATHER DEPENDENT*

### **HOURS:**

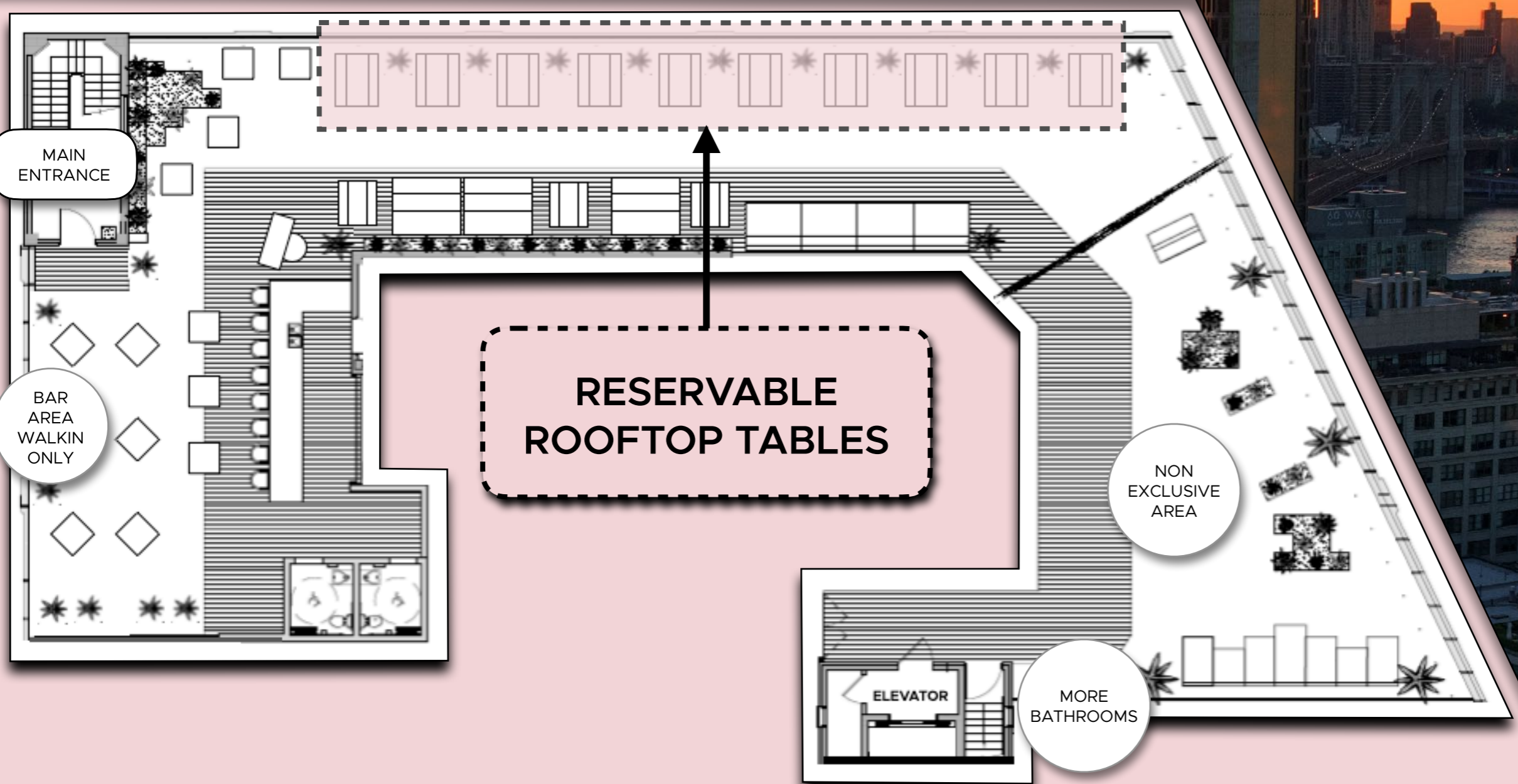
THURSDAY 4PM - 11PM

FRIDAY 4PM - 11PM

SATURDAY 3PM - 11PM

SUNDAY 1PM - 9PM



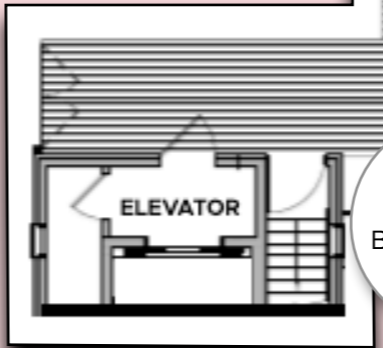


MAIN  
ENTRANCE

BAR  
AREA  
WALKIN  
ONLY

**RESERVABLE  
ROOFTOP TABLES**

NON  
EXCLUSIVE  
AREA



MORE  
BATHROOMS





# ROOFTOP TABLE

UP TO 10 PPL

BEER GARDEN TABLE POSITIONED AGAINST THE GLASS RAILING FACING MANHATTAN ACROSS THE EAST RIVER

## GOOD FOR:

GROUPS THAT WANT TO RESERVE A HOME BASE ON THE ROOFTOP WITH UNOBSTRUCTED, PHENOMENAL VIEWS

**\$375 = 3HR BOOKING +1 MIXED DRINK TUB**  
(5 randolph beers + 5 rubi hard seltzers + 5 archer roose wines)

NO MINIMUM SPENDS OR OTHER REQUIREMENTS.

4 TABLES MAXIMUM PER GROUP



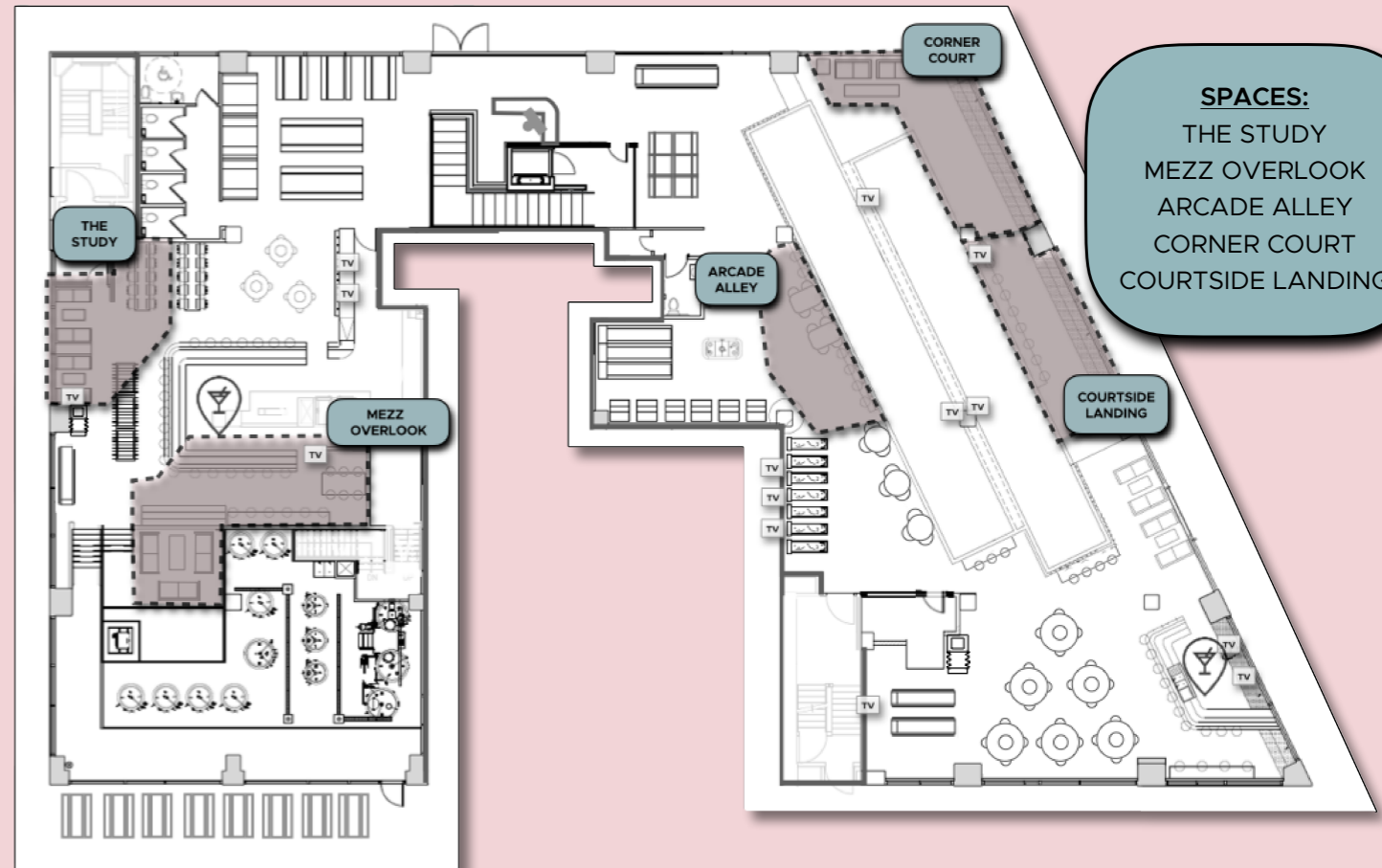




# INSURANCE HOLD

AVAILABLE FOR ROOF BOOKINGS  
BETWEEN 20 AND 40 PPL

ADD INSURANCE TO TAKE ONE OF OUR INDOOR SPACES OFF THE MARKET  
INCASE THE ROOFTOP CLOSSES DUE TO WEATHER



IF YOU END UP INDOORS, THE ROOF TABLE FEE GETS REFUNDED TO YOU,  
LESS THE INDOOR SPACE FEE + THE INSURANCE HOLD

OUR ROOFTOP IS ALL OUTDOORS  
DURING RAIN AND UNSAFE WEATHER  
CONDITIONS, WE ARE REQUIRED  
TO CLOSE THE ROOFTOP

INDOOR SPACE	INSURANCE HOLD	SPACE FEE
THE STUDY (up to 40ppl)	\$200	\$450
MEZZ OVERLOOK (up to 40ppl)	\$200	\$450
COURTSIDE LANDING (up to 40ppl)	\$175	\$400
CORNER COURT (up to 30ppl)	\$175	\$400
ARCADE ALLEY (up to 30ppl)	\$150	\$300





WE HOPE TO  
SEE YOU SOON!